

¹Hang Hang*

Trace Reconstruction -- Urban Renewal

Design of Xuanqiao River Section of

Pingjiang Historical District



Abstract: - The protection and renewal of historic districts is the key content of the new stage of urban development, which contributes to the sustainable development of the city and the construction of a livable environment. This paper first reviews the formation of the conservation and renewal theory of historical blocks at home and abroad, analyzes the relevant practical cases, and then selects the Xuanqiao River section of Pingjiang Road historic block as the research object to conduct an in-depth discussion on its conservation and renewal design based on its historical evolution and cultural heritage. Through the method of spatial narration, we try to solve many existing problems and reshape the bustling scene of the hanging bridge lane.

Keywords: Trace reconstruction; Historical block; Protection and renewal; Spatial narrative; Suspension bridge lane

INTRODUCTION

A city is a place for social activities which is superimposed, fused and engraved on the buildings with bearing functions and based on material carriers. It has the characteristics of cultural continuity, functional compound and architectural diversity, and has economic and commercial value such as resource reuse. However, in today's globalization of cities, the connection between modern civilization and history and culture has been broken, and the only way to explore this connection is the historical district in a corner of the city.

As Morton puts it, "The built environment is one of many historical sites, along with words, works, sculptures, music, etc., all of which are woven together to represent our history. And history becomes the basis for understanding the times we live in." The protection and renewal of Pingjiang Historic District will carry the historical memory of Suzhou, a famous historical and cultural city. It is the basis for the continuation and inheritance of the city culture, the main carrier for the inquiry of the historical structures, indoor and outdoor environment, traffic and landscape of the city, and an important way for the sustainable development of the city and the construction of a comfortable living environment.

1 PRELIMINARY RESEARCH AND PROBLEM ANALYSIS

1.1 Design Background

Pingjiang Historical District is located in the northeast corner of Suzhou ancient city, bordering Ganjiang Road in the south, Beita East Road in the north, Wai Cheng River in the east, and Lindun Road in the west, maintaining A double-checkerboard pattern of "rivers and streets in parallel" This area is distributed along the Xuanqiao River, which is a typical Soviet-style riverside building. Suspension bridge lane starts from Lindun Road in the west and ends at Pingjiang Road in the east, connecting with the old Xueqian Road. It has attracted

¹ *School of Architecture and Urban Planning, Nanjing University Nanjing 210093, Jiangsu, China. Email: 502022360008@smail.nju.edu.cn
Copyright © JES 2024 on-line : journal.esrgroups.org

numerous literati and poets, and has maintained the lifestyle and atmosphere of modern residents. According to statistics, the total area of Pingjiang historical block is 67.6 hectares, the core protection area is 48.4 hectares, and the key functional area is 28.64 hectares (Figure 1). It retains the traditional architectural style of powdered walls and black tiles, as well as the historical famous people's former homes, Bridges, revetments, ancient Wells, ancient trees and brick gatehouses and other important remains, which have important protection and renewal significance.

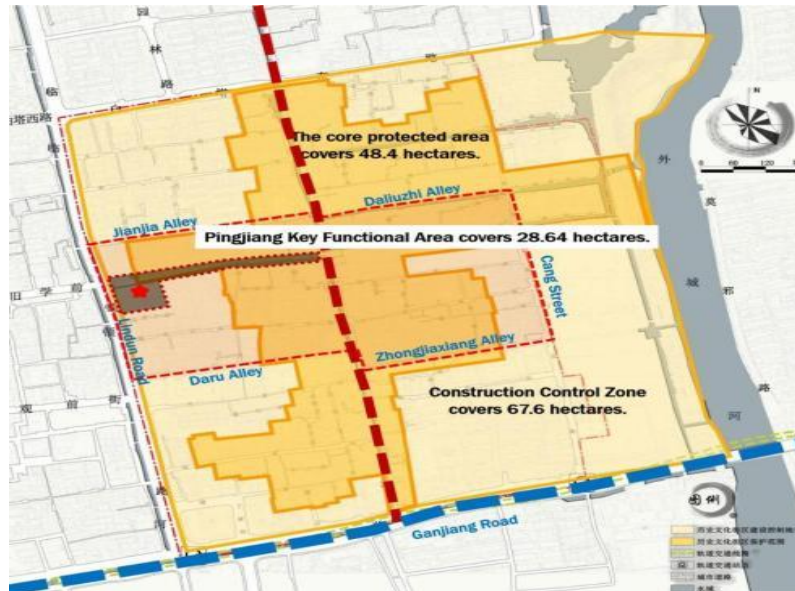


Figure 1 Plan of the Base and Pingjiang Historical and Cultural block (Source: self-drawn by the author)

1.2 Previous Research

1.2.1 Base Overview

The base is located in the south of Suspension bridge lane, and the traditional residential groups distributed in the east and west direction and the west entrance of Pingjiang Historical District (the former Pingjiang District government land) are the main parts of the base. This area is distributed along the suspension bridge River and is a typical Soviet-style riverfront architecture. Suspension bridge lane starts from Lindun Road in the west and reaches Pingjiang Road in the east, connecting with the old Xueqian Road. Suspension Bridge Lane, formerly known as Yingchun Lane, is 414 meters long and 2 to 6 meters wide. During the Wanli period of the Ming Dynasty, Wei Zhongxian, a powerful minister, built a real view in the lane and built a suspension bridge to control personnel access, so Yingchun Lane was renamed the suspension bridge Lane. In 1985, the elastic stone pavement in the lane was changed to hexagonal pavement, and now it is a rectangular brick cement pavement. At present, the functions of the site include the traditional residential buildings in the middle section and the mixed land of commercial offices at both ends. Most of the buildings were built in the 1980s, and a small part of the buildings in the Republic of China period are mainly one-story or two-story buildings. There are several material and cultural relics in the base, with convenient transportation and high accessibility. However, the site has a single function and the construction quality is average. In order to improve the function of the area, it is necessary to combine regional characteristics, introduce new functions, and explore the future value of the land.

The overall renewal needs to be modernized and innovative on the basis of retaining the style of the suspended bridge lane and the suspended bridge river.

1.2.2 Historical Changes

Suspension bridge Lane has undergone a lot of historical changes. It can be seen from the Pingjiang Map of the Song Dynasty that sporadic traditional dwellings began to appear in the area of Suspension bridge Lane. In the Ming Dynasty, with the development of commodity economy such as weaving and dyeing industry, this area became the center of textile industry, and the population became increasingly dense. The water system was further developed, and many new river channels appeared, and more houses were built on both sides. In the Qing Dynasty, the street broke through the restrictions of traditional architectural space, the population of hanging bridge lane increased, celebrities came out in large numbers, and the whole street became bustling. During the period of the Republic of China, Suspension bridge Lane lost its original popularity and vitality. Before liberation, it was mostly the function of private houses and ancestral halls. In the early days of the founding of the People's Republic of China, there was a nationwide war on private reconstruction. In addition to a few of the ancient buildings allocated to owners for private use, most of them were nationalized and turned into directly managed public housing. The lighting and ventilation conditions of the houses are poor, and the living infrastructure is incomplete. In order to increase the living area, some units and individuals have built many illegal buildings, which has aggravated the deterioration of the living environment. Some halls and gardens have been destroyed, causing relatively serious damage and irreparable losses to the ancient folk houses.

1.2.3 Celebrity Stories

Many famous people have left wonderful stories in the Hanging Bridge Lane. Xu Bo, a scholar in Ming Dynasty, Huang Pilie, a scholar in poetry, Zhu Shou and his wife Gao Mei, Ding Jinxin, a native of Wu County, his father and his nephew, Hong Jun, a scholar in late Qing Dynasty, Qian Boxuan, a physician in traditional Chinese medicine, Fang Jiamo, Gu Jiegang, a historian, and Ye Shengtao, an educator, all left beautiful stories in the alley.

1.3 Problem Analysis

According to the previous photos (Figure 2) and tour experience, the author found that in the current development process of Pingjiang historical district, there are some problems that need to be solved, such as the loss of cultural atmosphere, the excessive occupation of residential space by modern commercialization, the fragmentation of street and lane pattern, and the dispirited-up street interface.



Figure 2 Current Situation of Pingjiang Road (source: author's photo)

2. CONCEPT GENERATION AND CASE ANALYSIS

2.1 Concept Generation

Based on the strong cultural and historical background of Suspension bridge lane and the very characteristic linear space, the author reminds of the spatial narrative method. Spatial narrative is to describe the event type, personnel relationship and sensory experience in the time flow through the hidden relationship of different Spaces. Because the base has rich historical stories and cultural deposits, it is suitable to adopt the way of spatial narrative to protect and renew the design. To solve the problems and contradictions existing in the site, it is expected to reshape the prosperous scene and activate the suspended bridge lane through "tracing reconstruction".

2.2 Case Analysis

2.2.1 Deconstruction and Substantive Translation of Narrative Texts: A Case Study of the Manhattan Manuscript

Bernard Tschumi, a famous architecture critic, divides architecture into three seemingly unrelated systems in his book *Manhattan Manuscript*: space system, event system and motion system. These three systems are completely different and even have a certain degree of fragmentation but there is an internal relationship. Through this association, Tschumi organically superimposes these three systems, thus achieving the interpenetration of space and event events. The four chapters of the book - the park, the street, the tower, and the block (Figure 3) - are four distinct spatial archetypes, which Tschumi carefully unites by telling a murder detective story, allowing them to play different roles in the narrative process.

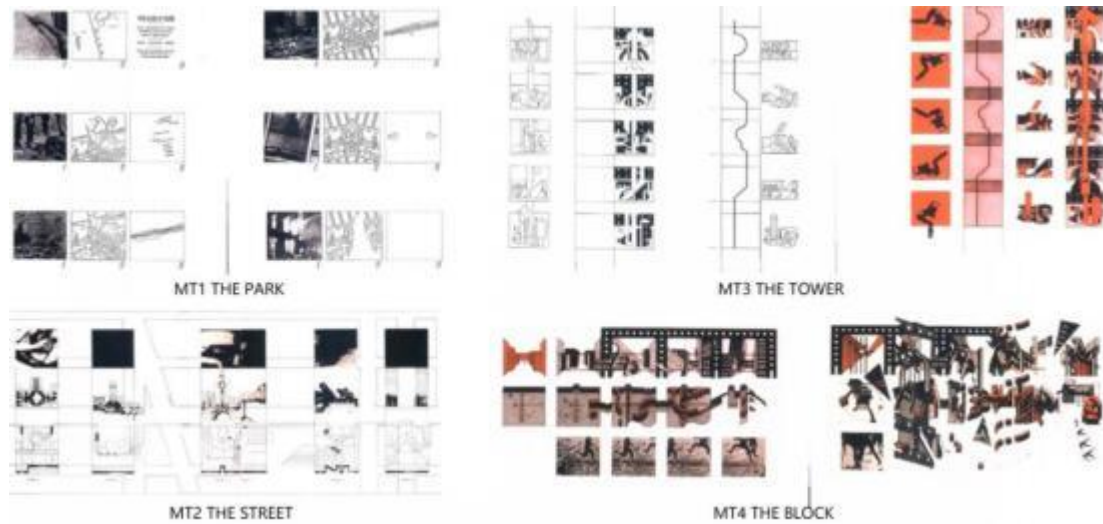


Figure 3. Four Spatial Prototypes of the Manhattan Manuscript (Source: Compiled by the author according to the Manhattan Manuscript)

2.2.2 The Internal Connection Between Narrative Text and Place Spirit -- A Case Study of Poohtown

The Poohtown, the student group in the 2014 RIBA competition, depicts a happy world based on winnie the Pooh. In the 1920s, when the cartoon was published, an English city, which developed rapidly after the war, was full of repression after the war. In the 1920s, when the comic was published, Slough, a city in England, was a place of post-war depression despite its rapid industrial development. The designers of the scheme re-examined Slough in this historical period and used Winnie the Pooh as a metaphor and main line to actively explore the possibility of emerging industries “happy economy”. He takes the main character in Winnie the Pooh as the boundary of the city plane. The drifting bottle, rabbit picnic park, drifting bottle parking area and hot air balloon parking area can be used as transportation and residential. Some specific architectural details in the city have metaphorical shapes (Figure 9).



Figure 9. Metaphorical Representation of the Poohtown Scheme

(Sources: <https://mp.weixin.qq.com/s/iPkXdqvaJWZXa83Pb0T2-w>)

3 SCHEME DEDUCTION AND DEEPENING DESIGN

3.1 The Present Situation of Carding - “Tracking”

3.1.1 Value assessment and Building Classification

The author sorted out the basic information of the existing 33 buildings in the base and made a basic assessment of their value from various aspects (Table 1). Based on the relationship between form and courtyard, individual buildings and group buildings are subdivided (Figure 5). Based on this, a comprehensive overview of the site is made, which becomes the most important starting point for the scheme.



Figure 5 Group building classification (Source: self-drawn by the author)

Table 1 Basic Value Assessment of 33 Existing Buildings in the Site (Source: self-drawn by the author)



List of Current Situation

Number	Asymmetry	plan	Build Year	Structure of Floor Space	Atticage	Structure	Floor	Condition	Public Space	Roof	Door and Windows	Wall	Architectured by	Quality of Construction	Comprehensive Assessment	Protection and Renovation
1			After the 1970s	No 1st Storage	Structure of floor space	1	1	Structure of floor space				Without		Good	Good	Good
2			After the 1970s	No 1st Storage	Structure of floor space	1	1	Structure of floor space				Without		Good	Good	Good
3			After the 1970s	No 1st Storage	Structure of floor space	1	1	Structure of floor space				Without		Good	Good	Good
4			After the 1970s	No 1st Storage	Structure of floor space	1	1	Structure of floor space				Without		Good	Good	Good
5			After the 1970s	No 1st Storage	Structure of floor space	1	1	Structure of floor space				Without		Good	Good	Good
6			After the 1970s	No 1st Storage	Structure of floor space	1	1	Structure of floor space				Without		Good	Good	Good
7			After the 1970s	No 1st Storage	Structure of floor space	1	1	Structure of floor space				Without		Good	Good	Good
8			After the 1970s	No 1st Storage	Structure of floor space	1	1	Structure of floor space				Without		Good	Good	Good
9			After the 1970s	No 1st Storage	Structure of floor space	1	1	Structure of floor space				Without		Good	Good	Good
10			After the 1970s	No 1st Storage	Structure of floor space	1	1	Structure of floor space				Without		Good	Good	Good
11			After the 1970s	No 1st Storage	Structure of floor space	1	1	Structure of floor space				Without		Good	Good	Good
12			After the 1970s	No 1st Storage	Structure of floor space	1	1	Structure of floor space				Without		Good	Good	Good
13			After the 1970s	No 1st Storage	Structure of floor space	1	1	Structure of floor space				Without		Good	Good	Good
14			After the 1970s	No 1st Storage	Structure of floor space	1	1	Structure of floor space				Without		Good	Good	Good
15			After the 1970s	No 1st Storage	Structure of floor space	1	1	Structure of floor space				Without		Good	Good	Good
16			After the 1970s	No 1st Storage	Structure of floor space	1	1	Structure of floor space				Without		Good	Good	Good
17			After the 1970s	No 1st Storage	Structure of floor space	1	1	Structure of floor space				Without		Good	Good	Good
18			After the 1970s	No 1st Storage	Structure of floor space	1	1	Structure of floor space				Without		Good	Good	Good
19			After the 1970s	No 1st Storage	Structure of floor space	1	1	Structure of floor space				Without		Good	Good	Good
20			After the 1970s	No 1st Storage	Structure of floor space	1	1	Structure of floor space				Without		Good	Good	Good
21			After the 1970s	No 1st Storage	Structure of floor space	1	1	Structure of floor space				Without		Good	Good	Good
22			After the 1970s	No 1st Storage	Structure of floor space	1	1	Structure of floor space				Without		Good	Good	Good
23			After the 1970s	No 1st Storage	Structure of floor space	1	1	Structure of floor space				Without		Good	Good	Good
24			After the 1970s	No 1st Storage	Structure of floor space	1	1	Structure of floor space				Without		Good	Good	Good
25			After the 1970s	No 1st Storage	Structure of floor space	1	1	Structure of floor space				Without		Good	Good	Good
26			After the 1970s	No 1st Storage	Structure of floor space	1	1	Structure of floor space				Without		Good	Good	Good
27			After the 1970s	No 1st Storage	Structure of floor space	1	1	Structure of floor space				Without		Good	Good	Good
28			After the 1970s	No 1st Storage	Structure of floor space	1	1	Structure of floor space				Without		Good	Good	Good
29			After the 1970s	No 1st Storage	Structure of floor space	1	1	Structure of floor space				Without		Good	Good	Good
30			After the 1970s	No 1st Storage	Structure of floor space	1	1	Structure of floor space				Without		Good	Good	Good
31			After the 1970s	No 1st Storage	Structure of floor space	1	1	Structure of floor space				Without		Good	Good	Good
32			After the 1970s	No 1st Storage	Structure of floor space	1	1	Structure of floor space				Without		Good	Good	Good
33			After the 1970s	No 1st Storage	Structure of floor space	1	1	Structure of floor space				Without		Good	Good	Good

3.1.2 Context Search and Collation

The search of context is mainly divided into two aspects. On the one hand, it is to find the most prosperous historical scenery of Suspension bridge lane. From the perspective of historical changes, the Qing Dynasty was the most prosperous period here, so the author chose the Prosperous Map of Gusu by Xu Yang in the Qing Dynasty as the reference object to learn from the way of building street scenes at that time. Prosperous Suzhou. On the other hand, I found the most real hanging bridge stories. Through searching for information, I found ten real stories that once happened in hanging Bridge Lane, which were summarized as scenic spots, book collection, happy residence, fireworks, cultivation, visiting, friendship, elegant collection, workshops and restaurants;

(1) Visiting Scenic Spots

Ming Dynasty scholar Xu Bo went into the reclusive study of Shan Zhang, will give his lane house to his grandson Xu Meisu. The house land area is very large, and there are exquisite Yuanqiao Confucian Pavilion, Lahe Pavilion, Biwu Niche and other scenic spots that are excellent for leisure and sightseeing. Unfortunately, the house land was left unattended and gradually abandoned.

(2) Collecting Books

Huang Pilie was one of the most famous book collectors in the Qianlong Jiaqing period. It is said that he was a booklover whose eyes lit up when he saw quality books. He collected nearly 300 Song edition books in his lifetime. In the seventh year of Jiaqing, he moved to Hang Qiao Lane and specially built a book collection "Baisong Yi Chan" to collect the good books engraved in Song Dynasty. The plaque remains in the alley today.

(3) Living in Joy

The poet Zhu Shou was famous when he was young, but he was always unable to win the provincial exam. He went to Beijing five times in vain, during which he lost five friends and relatives and was deeply grieved. In the autumn of Daoguang's 11th year, his efforts were rewarded and he became a man. He returned to his hometown and lived in Hanging Bridge Lane, which was one of the few happy experiences of his later life.

(4) Vitality

Suspension bridge Lane is a typical water lane, which retains the Jiangnan scenery of Suzhou small Bridges and water houses. Ding Jiyang Yizhuang, No. 41 Suspension bridge lane, was built by Ding Jinxin, a native of Wu County, and his father and nephew, who jointly spent more than 15,000 yuan to buy land in Daoguang 18 years. The brick forehead, gate house, roof and the now broken powder wall of the ancestral hall show the rich life atmosphere of the hanging bridge Lane.

(5) Nature-cultivation

Hongjun, the top scholar in the late Qing Dynasty, was a famous diplomat in the late Qing Dynasty and was promoted to the cabinet bachelor in the reign of Guangxu. During that time, his mother died and he went home to mourn. He met the famous prostitute Sai Jinhua in Suzhou. They fell in love at first sight and soon became

husband and wife and lived together in the Kwai Yin Hall in Hanging Bridge Lane. They are the model couple in the lane.

(6) Visiting

In the late Qing Dynasty, there were many famous doctors in Suspension bridge lane. 23, 25 people live in the house is Qian Boxuan, 22 years old in this alley to practice medicine, thoughtful service, excellent medical skills, is a reliable old traditional Chinese medicine in the lane. House 47 was once home to a famous western doctor, Fang Jiamu, who was not only a neighbor but also an alumnus of Qian Boxuan. Therefore, Suspension bridge lane was a famous place for seeking medical treatment at that time, with both Chinese and western aspects, and medical seekers often visited the door.

(7) Friendship

The famous historian Jie Gang Gu and educationist Ye Shengtao were friends since childhood. They studied in Zhang's private school together. They made great contributions to Chinese literature in their respective fields. Mr. Gu in his book "Human Mountains and Rivers" also wrote "A record of 30 years ago and Saint Tao friendship", which mentioned that "Saint Tao and I lived together in the hanging bridge lane when he was young". It can be seen that Hanging Bridge Lane bears witness to the profound friendship between the two great men.

(8) Literati Gathering

In ancient times, when the weather was good, there would often be carrying hawkers along the lane to walk through the lane and buy and sell with residents, and they would stop to chat with residents in the corner in their leisure time. Near the river, there are often ships passing by, selling goods, and conducting water market transactions directly by the window, which is also a major feature of Hanging Bridge Lane and Hanging Bridge River.

(9) Workshop

With the development of commodity economy such as the weaving and dyeing industry in the Ming Dynasty, this area gradually became the center of the textile industry, and some workshops and crafts left memories in the alley. In the 1950s, there was a production cooperative that made pattern plates for silk factories.

(10) Restaurant

In modern times, the old alley began to appear some street stalls and some Soviet-style special snacks, eating is many years of human touch, but also contains the taste of the long history of hanging bridge alley.

The author organically integrated these ten stories into the "Gusu Prosperity Map" to find corresponding scenes (Figure 6), and created "Ten views of the Suspended bridge" as the basic prototype for writing "story script".

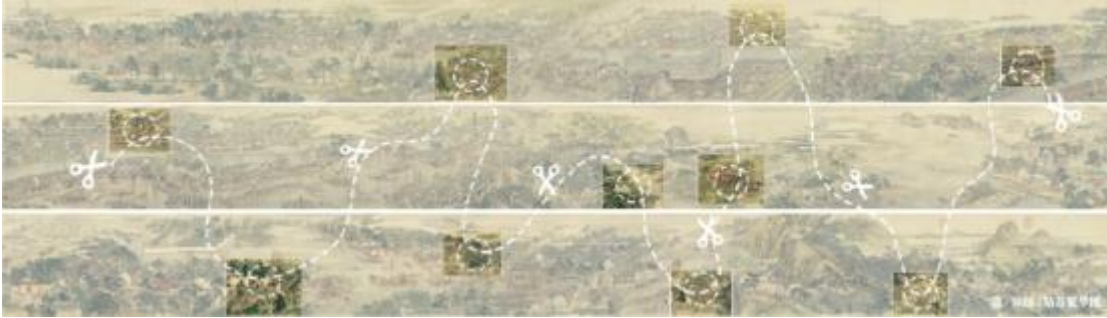


Figure 6 Prototype extraction of Gusu Prosperity Map (Source: self-drawn by the author)

3.1.3 10 Scenarios Analysis - Building a “Storyscript”

- (1) Combing the time line, character relationship and place of ten stories;
- (2) Find the series between stories as the basis for subsequent node connection and function composite;
- (3) Categorizing different story development types (single-point, multi-point, linear);
- (4) Classifying the occurrence locations of different stories (ancient dwellings, courtyard-houses, suspension bridge lane, suspension bridge river, etc.) as the basis for subsequent node design locations.

3.2 Spatial Narration -- “Reconstruction”

3.2.1 Scene Translation -- Shaping the “Spatial Script”

- (1) According to field existing elements, the important historical scenes combined with modern features and segment design into the field;
- (2) Analyze the main route of each scene in the story script, and combine and connect each building in the base according to the general scope of the scene and function;
- (3) The overall analysis of the three lines related to the tourist experience -- the suspended bridge river, the suspended bridge lane and the main tour line is carried out to get the general position of the node design;
- (4) According to the story script, the scene connection, development type and location are deeply analyzed, and the specific location of the site design is obtained.
- (5) Analyzing the layout and space of each scene in the story script, correspond to the site according to the node position, and update the site layout;
- (6) Based on the current status of the site, including the upper planning, architectural style, current problems and other aspects of the existing building foundation value assessment. According to the space script, complete the detailed analysis of the demolition and modification, and revise the transformation design.

3.2.2 Function Layout Remodeling

In the “space script”, the most appropriate location of the ten views of the suspension bridge in the site was determined, and the functional layout of the site was adjusted and reshaped based on this (Figure 7). The west side of the street group to create a complete interface, the inner side combined with the opposite bank, to create

a collection of tourists, residents living services and catering as one of the complex. Group along the river and the opposite bank form a group to create a boutique B&B. From the lively atmosphere along the street gradually immersed, and then to the linear street space, and implanted tea room, coffee bar, library and other functions, to create a comfortable and quiet street atmosphere.

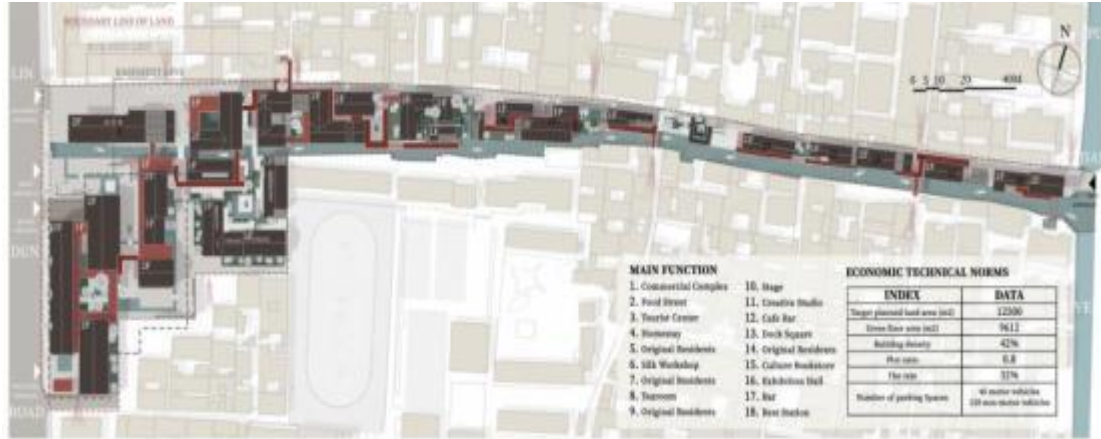


Figure 7 General plane (Source: Self-drawn by the author)

3.2.3 Space Systems and Structure Level

The scheme reflects the rich spatial system of the whole site from multiple perspectives of cluster flow line, function, landscape and corridor (Figure 8). In particular, the placement of the corridor connects the narrative line, shuttling inside and outside the ups and downs into each node, allowing visitors to experience different narrative Spaces. At the same time, the original street space is also returned to the original residents, including the residents on the south and north sides of the suspension bridge lane can enjoy this connected flow line, and participate in various activities and business functions.

The overall design fully considers the corresponding relationship between several important structural levels, such as the building roof, support system and slow corridor, and the site (FIG. 9), which is well adapted to the overall texture of Pingjiang Road and the environmental atmosphere of the street.

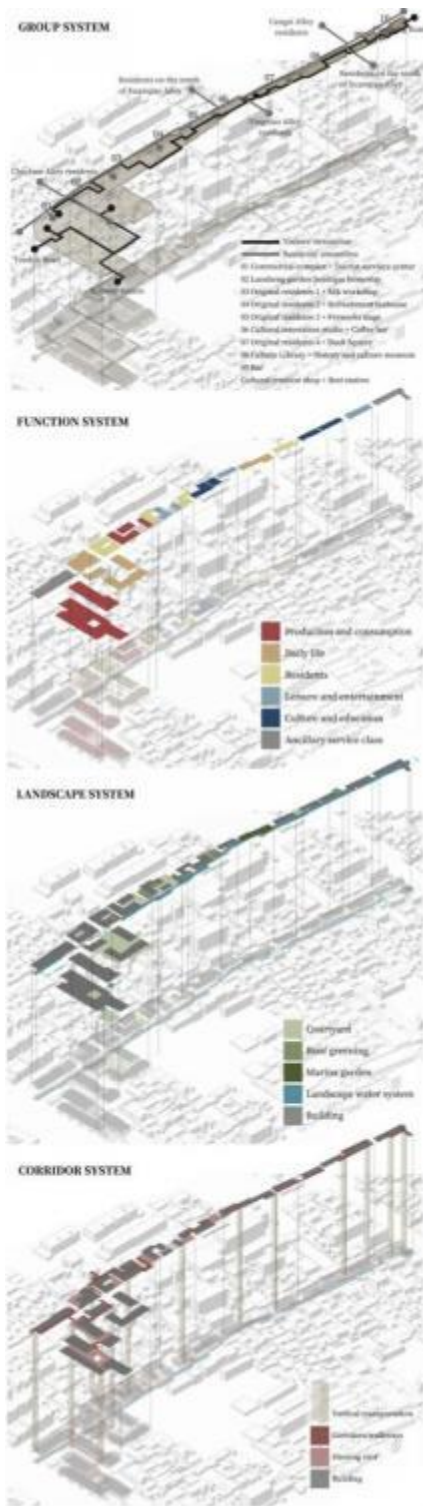


Figure 8 Spatial system (Source: Self-drawn by the author)

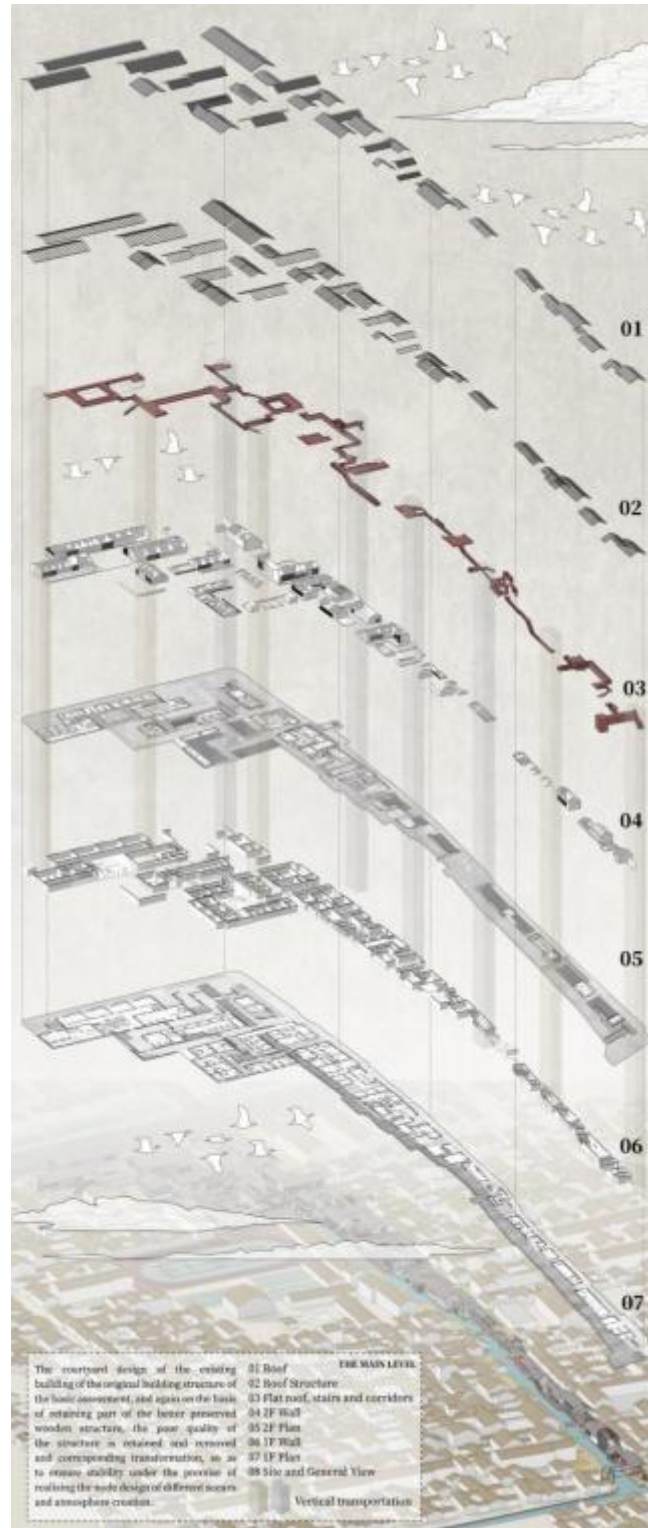


Figure 9 Structure level (Source: Self-drawn by the author)

3.2.4 Improving the System for Demolition, Modification and Retention

Based on the basic value of the existing building, axis control, height adjustment and place atmosphere as an

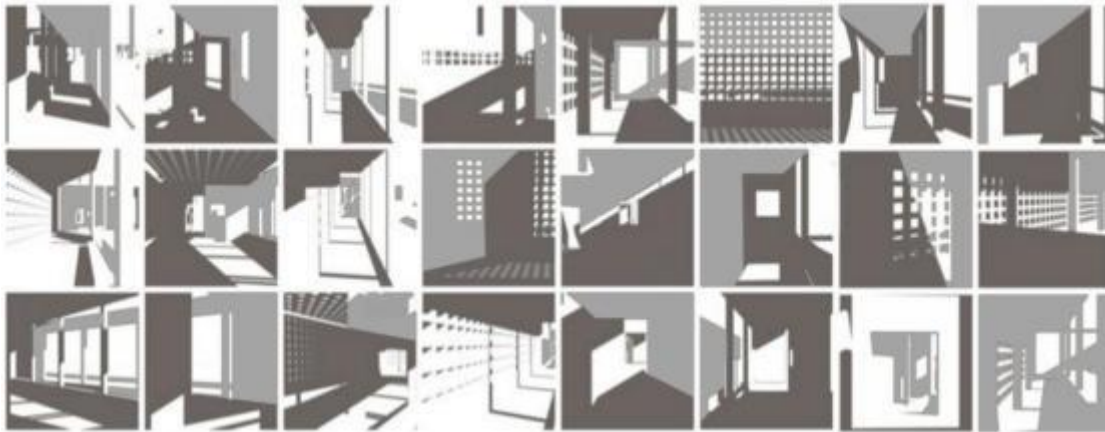


Figure 11 Light and shadow effect (Source: self-drawn by the author)

3.3 New “Ten Views of Suspension Bridge”

Following the historical context, the spatial script is reconstructed, and on this basis, one of the representative nodes is selected to further design the structural details and material selection of the buildings in the area (Figure 12). While strengthening the structure, it can better create the historical and cultural atmosphere of traditional buildings and realize the symbiosis of the old and the new. The new “Ten Views of the Suspended Bridge” shows the character activities and scene atmosphere of different nodes (Figure 13), which realizes the protection and renewal of the historical block of the Suspended bridge lane.

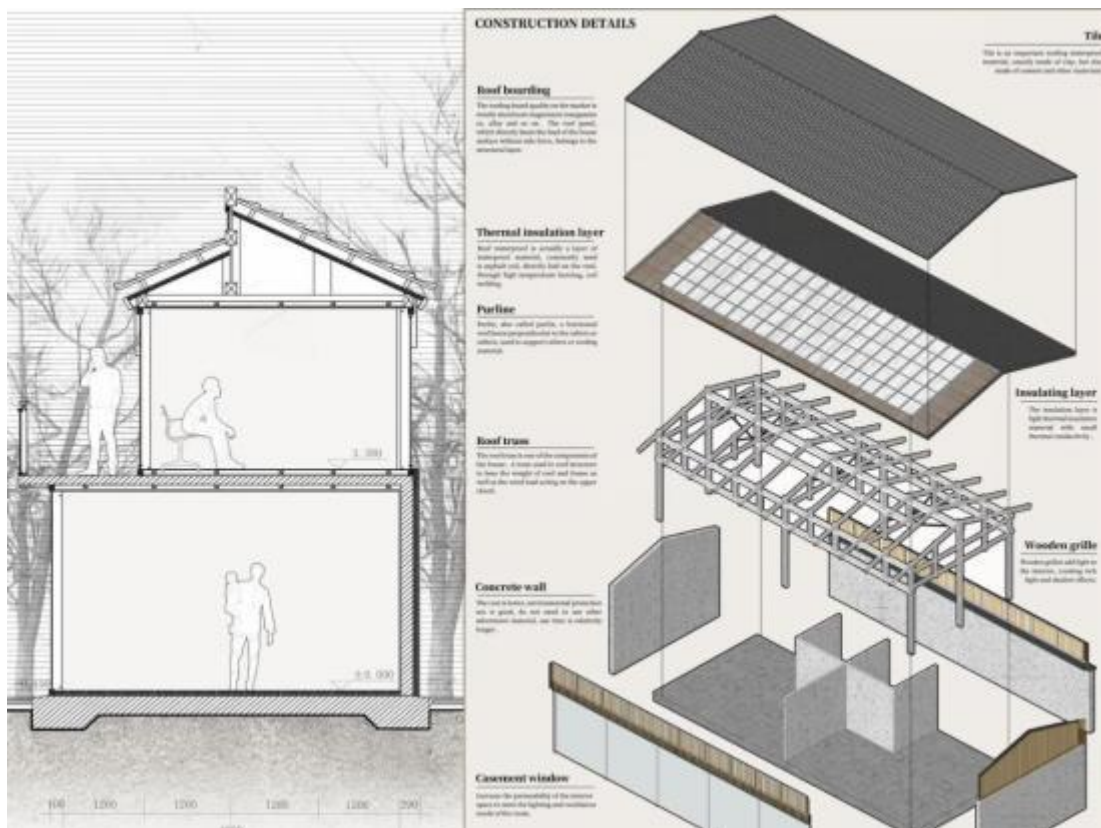


Figure 12 Construction Details and Material Selection (Source: self-drawn by the author)

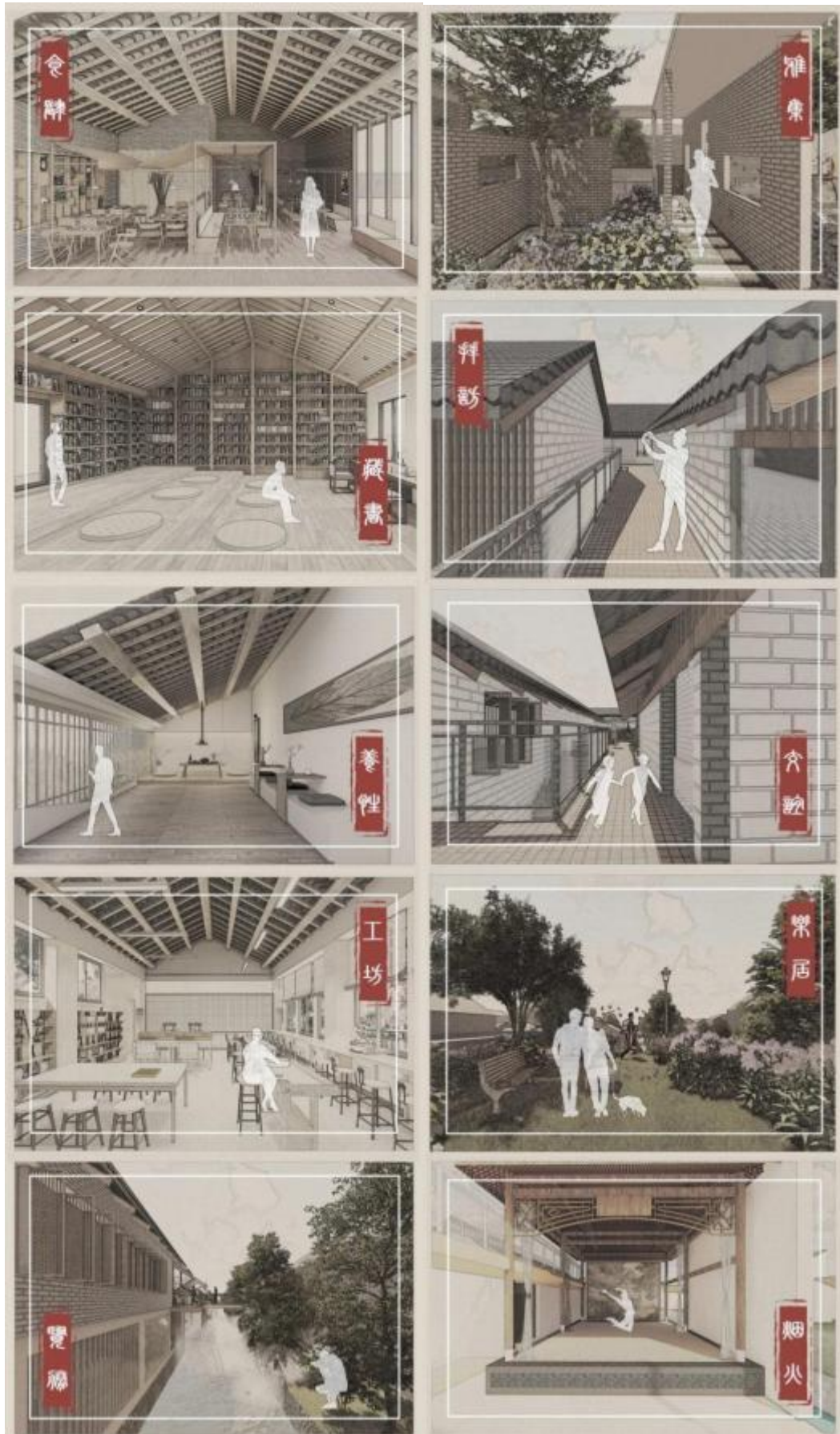


Figure 13 New “Ten Views of Suspension Bridge” (Source: self-drawn by the author)

4. CONCLUSION

The preservation and renewal of historical blocks carry the historical memory of a city's development, which is the fundamental guarantee for the continuation and inheritance of the city's culture, the main carrier for querying the city's historical structures, indoor and outdoor environment, traffic and landscape, and the important way for sustainable urban development and the construction of a comfortable living environment.

This paper takes the urban renewal design of Xuanqiao River section of Pingjiang Historic District as an example. Based on the analysis of the current situation and problems, it carries out the protection and renewal design of the historic district through the spatial narrative method, which is of great significance to the protection of the key functional area of Pingjiang Road, the shaping of the cultural atmosphere of the area and the improvement of residents' quality of life. It can be seen that the value of preservation and renewal of historical blocks is huge, and its theoretical research and practical exploration should also continue to explore and innovate, so as to better empower the development of urban renewal.

REFERENCES

- [1] Ruan Yisan, Wang Jinghui, Wang Lin. Protection Theory and Planning of Famous Historical and Cultural Cities [M]. Shanghai: Tongji University Press,1999,5
- [2] Zhang Song. Introduction to Historical Urban Conservation: A Holistic Approach to the protection of Cultural heritage and historical Environment [M]. 2nd Ed. Shanghai: Tongji University Press,2008,44
- [3] Huang Yong, Shi Yaling. Review and Inspiration on planning and practice of conservation and renewal of historic blocks at home and abroad [J]. planner,2015,31(04):98-104.
- [4] AKPINAR F, TURAN M, TOKÖZ Ö D. Urban protection and renewal dilemma: İzmir Mezarlıkbaşı[J]. A/Z ITU Journal of the Faculty of Architecture, 2021, 51-52
- [5] Liu Jian. Conservation practices of historic districts in France: A case study of Paris [J]. Beijing planning and construction, 2013(4): 22-2.
- [6] Cong Lei. Study on self-renewal mechanism of historic settlements in the United States [J]. planner, 2012(11): 117-122.
- [7] Hui Yu,Xinjie Sui,Mengfei Jiao. Protection and Renewal of Historic Blocks Based on Architectural Typology[J]. Art and Design Review,2018,6(3):
- [8] Ruan Yisan, Cai Xiaofeng, Yang Huawen. Repairing texture and reshaping style - Nanxun Town East Street "traditional commercial street. Analysis on the renovation of "district" [J]. Urban Planning Journal, 2005(4): 53-55.
- [9] Niehaus M, Ibieta P, Prieto A J, et al. Analytical methodologies concerning historic neighbourhoods for urban renewal in southern Chile. How to understand the place to intervene?[J]. Journal of Architecture and Urbanism, 2021, 45(1): 60-72.
- [10] Song Ruili. Spatial Characteristics Analysis and Renewal Strategy of Historical and Cultural Blocks: A case study of Pingyao Ancient City Historical Blocks in Shanxi Province [C]// Spatial governance for high-quality Development -- Proceedings of 2021 China Urban Planning Annual Conference (09 Urban Cultural Heritage Protection),2021:690-698.
- [11] Ruan Yisan, Sun Meng. Some problems of protection and planning of historical district in our country [J]. Urban Planning Review,2001(10):25-32.
- [12] Maryam Pourzakarya,Somayeh Fadaei Nezhad Bahramjerdi. Towards developing a cultural and creative quarter:

Culture-led regeneration of the historical district of Rasht Great Bazaar, Iran[J]. Land Use Policy,2019,89(C):78-80

ABOUT THE AUTHOR



Hang Hang was born in Changzhou, Jiangsu, China, in 1998. He obtained a bachelor's degree from Soochow University in China. He currently studying at the School of Architecture and Urban Planning, Nanjing University. His main research direction is architectural design and its theory.

E-mail: 502022360008@smail.nju.edu.cn