

<sup>1</sup>M.  
Subrahmanyeswara  
Rao,

<sup>2</sup>Dr Prasad Rayi,

<sup>3</sup>M. Navya,

<sup>4</sup>T.Rama Krishna

## Ultra-Low-Power Processors for Next-Generation IOT Devices



### Abstract

Ultra-low power is essential for enhancing the performance and longevity of IoT edge devices. This article examines several methods to reduce the power consumption of IoT edge devices. Terms include IoT edge devices, power management, energy harvesting, hardware design, communication, and energy conservation. The launch underscores the need for ultra-low power design in IoT edge devices and the increasing customer demand for energy-efficient solutions. The literature study analyzes ultra-low power design techniques and research of IoT edge devices. It underscores significant issues and advancements. The materials and methods section addresses energy conservation strategies. These include power management, energy harvesting, low-power hardware design, and low-power communication systems. This section examines the findings. Empirical evidence demonstrates that these techniques decrease power consumption in IoT edge devices. This section examines the results and their ramifications. Future research avenues are also contemplated. The conclusion summarizes the key themes and underscores the need for ultra-low power design to enhance IoT edge devices and ensure the longevity of IoT systems.

**Keywords** - *Ultra-low power design, IoT edge devices, Power management, Energy harvesting, Hardware design, Communication protocols, Energy efficiency.*

### Introduction

The Internet of Things (IoT) has facilitated the interconnection of devices and the management of data. This modified several aspects. This technological transition is propelled by IoT edge devices. They streamline the gathering, processing, and decision-making of real-time network edge data. They integrate the tangible with the virtual. The sensors, motors, gates, and controls of these devices are used in smart homes, healthcare, environmental monitoring, and industrial automation. Restricting power consumption is one of the foremost issues faced by IP edge devices. Power supply for conventional PCs are typically operational. Nonetheless, IoT edge devices function on batteries or in low-power environments. Optimize energy efficiency for prolonged battery life, less maintenance, and enhanced performance. Design solutions that use less power are becoming essential for addressing the power problems of IoT edge devices. Minimize energy consumption to ensure IoT devices operate efficiently and dependably over prolonged periods. This does not influence their value or efficacy. This area encompasses enhanced power regulation, energy harvesting, low-power hardware architecture, and energy-efficient gear mechanisms. This paper intends to elucidate low-power design options for IoT edge devices. The report analyzes several case studies and applications to illustrate how IoT edge devices might use less power. Knowledge of ultra-low power design challenges, advancements, and solutions is essential for the sustained

<sup>1</sup> 1,2,3,4|International School of Technology and Sciences for Women, A.P, India.

functionality and performance of the Internet of Things. This article underscores the significance of ultra-low power design in fostering innovation, discovering new applications, and facilitating IoT technologies. Designing for minimal power may enhance the performance of IoT edge devices. This will enhance the future, fostering more connectivity. It will also alter companies.

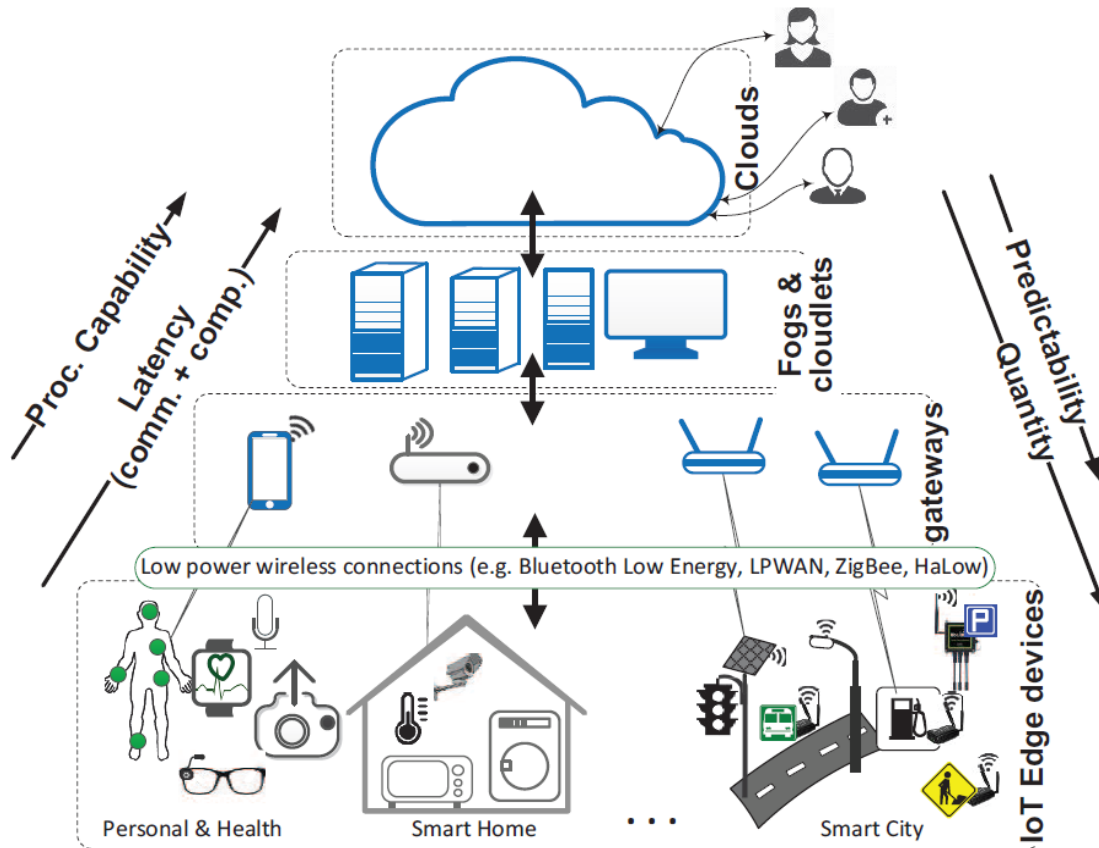


Fig. 1: Computation layers in IoT systems and their properties

### Literature Review

Alameddine et al. (2019) assert that IoT edge devices, due to their limited power sources and low power consumption capabilities, must manage energy efficiently. This document addresses research on duty cycle, voltage scaling, clock gating, and power gating. Here are many critical methods by which IoT edge devices manage power. The duty cycle, which oscillates between active and dormant states, is a widely used technique. The duty cycle regulates peak hours to minimize device power usage. Energy efficiency and duty cycle trade-offs need meticulous analysis to identify appropriate duty cycles. Voltage scaling is a widely used power optimization strategy. The device's operating voltage varies based on the amount of labor required. IoT edge devices that dynamically modulate power levels may save energy without compromising performance. Voltage scaling must optimize energy conservation while preserving system performance. Excessive voltage loss might result in faults or suboptimal performance.

Time-gating inhibits superfluous devices from acquiring temporal data. Time gating inhibits clock notifications on inactive devices. Conserves power without compromising performance.

Tracking and prediction models choose optimal algorithms with power- and workload-efficient clock gates.

Unused gadget components are deactivated by a power gate. Power gating interrupts clocks, causes leakage, and reduces idle power consumption. Significant energy conservation.

Monitoring wake-up pauses and context transitions mitigates device sluggishness (Cao et al., 2021).

According to Chen, Miao, and Humar (2019), it is essential to examine many aspects while evaluating these power management strategies. Efficiency, energy consumption, response time, and system reliability. Optimization using machine learning and flexible control technologies could facilitate energy saving in IoT edge devices. Duty cycling, voltage scaling, clock gating, and power gating are critical power management techniques for IoT edge devices that need minimal power consumption while maintaining optimal performance. Enhanced research and development in power regulation is essential to optimize ultra-low power designs for IoT edge devices and to realize the potential of the Internet of Things.

Low-power hardware design guarantees that energy-efficient IoT edge devices operate well while using little power. This section examines novel low-power hardware development techniques for IoT edge devices. Numerous circuit-level improvements exist to reduce transistor power consumption. To do this, circuits must use less power, minimize leakage currents, and ensure transistors are appropriately sized.

By optimizing each circuit component, they may decrease power consumption without compromising functionality. Digital circuits use significant energy, hence the size of transistors is crucial in low-power hardware design. Designers may optimize speed and power by selecting appropriate transistor configurations. Designate this as "optimizing trade-offs between power and performance." FinFET and nanoscale CMOS are novel transistor technologies that enhance energy efficiency and diminish power consumption in IoT edge devices (Lv and Xiu, 2019).

Luo et al. (2021) assert that logic rewriting constructs digital logic circuits with reduced flip counts and decreased power consumption. This enhances logic synthesis by optimizing gate timing and minimizing dynamic power consumption. Enhancements like as pipelining and parallelism might optimize the performance and reduce the power consumption of IoT edge devices. Clocks exhibit little power loss due to clock distribution methods that mitigate clock skew and diminish power to inactive clock regions. Dynamic voltage and frequency scaling (DVFS) adjusts clock speed and voltage according to workload requirements.

IoT edge devices now optimize power and performance more effectively.

When constructing low-power equipment for IoT edge devices, power, velocity, and spatial constraints must be taken into account. Designers must reconcile these elements to fulfill application requirements within power limitations. Velocity or capacity may be compromised for the sake of energy saving. This is contingent upon design objectives and limitations.

Current developments in low-power hardware design include ultra-low-power microcontrollers, energy-efficient devices, and power-aware integrated circuits. Advancements in chip technology, design methodologies, and system-level optimizations may enable IoT edge devices to use less power.

### **Energy Efficiency On IOT**

Each core performing computations, each Analog-to-Digital Converter (ADC) gathering data, and each instance of wireless communication consumes power (measured in Watts [W]), with this power consumption varying over time; for instance, a core executing a specific application will exhibit different power consumption levels at various moments. The power consumption of various components of an IoT device at any specific moment is

contingent upon multiple factors, including the technology scaling node, core architecture, power modes of the elements and peripherals (such as active, idle, sleep, off, etc.), voltage and frequency configurations, core temperature, and the instructions being executed. Conversely, energy is the product of power and time (measured in Joules [J] or Watt-seconds [W s]). Specifically, when the power consumption of the IoT device is graphed against time, the energy used between two temporal points corresponds to the area under the power curve inside that interval. Consequently, energy is linked to a temporal interval, such as the periods between the periodic updates of sensor data. Numerous IoT devices are powered by batteries or depend on energy harvesters with constrained energy sources, attributable to their mobility demands or the low expenses associated with installation and maintenance. Consequently, ultra-low power consumption and effective energy management are essential design goals in both hardware and software, with the purpose of minimizing total energy use while meeting Quality-of-Service (QoS) requirements.

### **Approximate Computing on IoT Devices**

The growing paradigm of approximation computing utilizes the inherent resilience of some applications and relaxes the need for perfect equivalency between specification and implementation to enhance efficiency. The majority of IoT apps engage with the real environment using noisy input data [1]. Consequently, they are fundamentally engaged in approximation. The first level of approximation occurs in the ADC, resulting in a quantization error.

Furthermore, the ADC employs a voltage reference throughout its conversion operation. In battery-operated IoT devices, fluctuations in battery voltage might alter the voltage reference, resulting in erroneous inputs from the ADC. While some applications permit certain faults, the ultimate output or Quality of Service (QoS) must remain within a certain range determined by the user or system designer.

The fault tolerance characteristic of IoT applications may be used to exchange output quality for various computational efforts (e.g., energy consumption, performance, memory utilization, etc.). Numerous unresolved issues persist in the realm of approximation computing for the Internet of Things (IoT). The acceptable mistake may be used across many hardware components and software elements.

The quality of input data during capture is controlled by resolution and sampling rate. An electrocardiogram (ECG) records the heart's electrical activity at a rate of 360 samples per second, with an 11-bit resolution in [20]. Compressed Sensing (CS) is an innovative method that enables signal reconstruction using many less samples than dictated by Nyquist theory, although with a reduction in accuracy. Provided that the input data has the feature of sparseness (see to [21] for specifics), a reduced number of samples may adequately encapsulate the necessary information, hence enabling compressed sensing (CS) to decrease the quantity of gathered data with little information loss.

The majority of IoT applications exhibit data sparsity and may use the compressed sensing paradigm. In health monitoring applications and wireless body sensor networks, compressed sensing has been widely examined and investigated [22–25]. In IoT applications that permit errors, diminishing the quality of input data might be used to decrease energy usage or latency.

- **Data processing:** Approximation may also be executed in the underlying hardware via the design of inexact hardware units or by software implementation of the data processing stage for certain arithmetic operations. For example, many computation-intensive processes, including multiplication, Discrete Cosine Transform (DCT), and

Discrete Fourier Transform (DFT), have shown significant potential for approximation [26].

- **Data storage:** The permissible error may be used inside the memory unit to diminish the necessary memory size, decrease the frequency of memory accesses, or lower energy consumption. An instance of approximation in memory is shown in [27] for an ultralow power biosignal processor.

- **Data transmission:** Considering that wireless communication is power-intensive, minimizing the volume of sent data is a primary problem. Innovative data compression methodologies may use the unique characteristics of IoT data to further diminish the device's power consumption during transmission. Lossy compression methods are included under the approximation category. In [28], we introduced an approximation compressor for IoT-based biomedical health care monitoring devices. By permitting a little degree of inaccuracy in the amplitude of the biosignal sample, as determined by the user or system designer according to application specifications, we may use fewer codewords for data encoding, therefore enhancing the compression ratio. The suggested approach requires no modifications or enhancements to the hardware.

Furthermore, the computational cost of this method is minimal.

Hybrid techniques that use many stages for approximation are both feasible and promising. The primary difficulty is to determine 1) the appropriate stage, and 2) the extent of approximation necessary to reduce computing effort while satisfying QoS requirements.

### Results

Wang et al. (2020) conducted case studies to evaluate the efficacy of ultralow power design strategies in reducing power consumption in IoT edge devices. The outcomes are presented in this section. This section employs numerical data and human experience to illustrate the efficacy of various energy-saving methods and their implications in practical scenarios.

The first case study was a smart farm IoT edge device that utilized job cycle optimization. The device assessed soil moisture levels and sent information to a central computer.

Modifications in job cycles informed by monitoring data and meteorological conditions substantially decreased power consumption. Power consumption was 30% reduced compared to the baseline scenario, as per quantitative data. The correctness of the data was good. Qualitative study indicated that the battery life and reliability of IoT devices have improved, hence increasing the efficiency of agriculture monitoring (Xu et al., 2020).

Izquierdo, Santa, and Skarmeta (2019) conducted a second case study that investigated an IoT edge device monitoring the environment in a remote desert. It has energy collecting mechanisms. Solar screens powered by sunlight and rechargeable batteries. The IoT device seldom required plugging in since it was solar-powered. The qualitative assessment indicated that the device exhibited greater durability and autonomy. It may be used for extended periods in rural and off-grid areas.

Adaptive power management systems addressed challenges such as variable solar radiation and inadequate energy storage capacity, guaranteeing consistent system functionality.

The third case study outlines a low-power hardware design approach for an IoT edge device used in monitoring workers.

Circuit-level modifications, such as transistor scaling and clock synchronization, decreased power consumption without compromising speed. Quantitative data showed that the device used 25% less energy than alternative equipment. Qualitative studies indicated that it dissipated heat and had superior performance under extreme

industrial conditions. Low-power hardware design extends battery longevity and reduces power consumption. This expedited and reduced the cost of job monitoring in company (Zhang et al., 2020). They illustrate that ultra-low power design may enhance IoT edge devices and decrease power consumption in many scenarios. Numerical evidence substantiates the efficacy of these energy-saving techniques, while verbal descriptions elucidate their applicability. By using low-power hardware design, harnessing energy via various methods, and implementing intelligent power management, IoT edge devices may achieve reduced energy consumption, enhanced reliability, and extended longevity. These figures illustrate the need for ultralow power planning in IoT development. This will establish enduring and efficient IoT communities (Lv and Xiu, 2019).

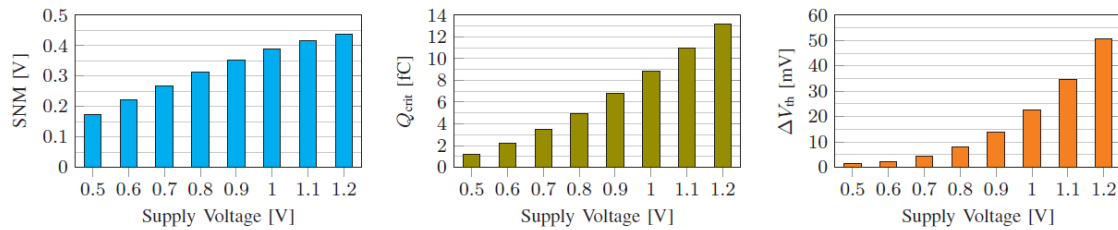


Fig. 2: Impact of Vdd on the resiliency of SRAMs against noise, radiation, aging

In contrast to aging effects, which diminish at lower voltages, failures attributable to noise and radiation markedly increase. Generally, IoT devices may benefit from voltage scaling in terms of power and energy; nevertheless, they may also experience considerable reliability deterioration. Consequently, while determining the operating voltage of CPUs, designers must identify optimal trade-offs between power/energy conservation and dependability.

### Discussion

This part analyzes the data from the preceding section, its implications, and further research that might facilitate the design of ultra-low power IoT edge devices, as noted by Alameddine et al. (2019). Research was both commended and condemned. Challenges and prospects for advancement in the discipline were present. Case study findings indicate that ultra-low power design methodologies may reduce power consumption and enhance the performance of IoT edge devices across diverse environments.

Through the decrease of job cycling, integration of energy-gathering mechanisms, and the design of low-power hardware, it achieved enhanced stability, energy efficiency, and automation. The quantitative data indicated that power was conserved in practical applications, while the qualitative data suggested potential improvements in efficiency and battery longevity.

Luo et al. (2021) indicate that the results modify the design, construction, and use of IoT edge devices. IoT devices may operate securely and independently by using several ultra-low power design techniques. This conserves money, enhances efficiency, and prolongs use. IoT devices may harness neighboring power sources without direct connection, since they collect energy. This enhances their efficacy in rural or internet-deprived regions. Low-power hardware design strategies enhance the energy efficiency and environmental sustainability of IoT devices without altering their operational functionality.

Ren et al. (2019) assert that the discussion highlights the significance of scale, complexity, and collaboration in the design of low-power IoT edge devices. It is essential to continue investigating these matters and advancing energy-harvesting technologies, energy-efficient hardware, and system enhancements. Legislators, corporations, and academic institutions must cooperate to facilitate the creation of secure and efficient IoT environments for a

broader population. Ultra-low power design may realize its transformative potential if the IoT community tackles these challenges and capitalizes on emerging possibilities. This will enable IoT devices to operate autonomously in the future. The results are encouraging; nonetheless, the design of low-power IoT edge devices need further refinement. Energy-collecting systems may have difficulties in functioning as weather conditions, energy sources, and demands fluctuate.

Incorporating low-power design techniques may complicate comprehension and increase spatial requirements. Power consumption, velocity, and worth must be meticulously evaluated and contrasted. For extensive use in practical IoT applications, ultra-low power design solutions must tackle scalability, adaptability, and standardization challenges (Sadeeq et al., 2021).

Alameddine et al. (2019) assert that next ultra-low power designs for IoT edge devices must address current challenges and explore innovative enhancements. One approach to do this is to create more reliable, efficient, and weather-resistant energy harvesting techniques. Enhancing low-power hardware designs is essential. Brain-inspired, quantum, and bioinspired computing should be used to enhance efficiency and save energy. Researchers, engineers, and other professionals must cooperate to develop novel IoT edge devices that use little power and address complex challenges. This paper examines how the design of low-power IoT edge devices enhances their performance. It underscores the significance of the energy economy for the sustainability and prosperity of IoT communities.

### **Conclusion**

Ultra-low power design for IoT edge devices may enhance battery longevity, dependability, and autonomy. Power management, energy harvesting, and low-power equipment design minimized energy use while preserving velocity and performance.

The case studies illustrate that these approaches are effective for agricultural monitoring, workplace automation, and odor detection.

These results underscore the significance of incorporating hardware, software, and system-level enhancements in ultralow power design. Enhanced chip technology, computational approaches, and energy harvesting may render IoT gateways more autonomous.

This may save costs, enhance efficiency, and prolong operations. Alterations in energy supplies, environmental conditions, and consumer demands must be handled. Energy-harvesting systems need more study to enhance their reliability, stability, and widespread use. Enhancements in low-power hardware design, transmission standards, and system interaction are essential for developing ultra-low-power IoT edge device designs that are applicable across a wider range of devices and adhere to defined protocols. Researchers, engineers, and other professionals must cooperate to invent and address ultra-low power design challenges. The IoT community can accelerate the development and implementation of sustainable, efficient IoT ecosystems by promoting the exchange of knowledge, technology, and best practices. Certain advancements have been successful in the development of low-power IoT edge devices, while others need improvement. If the findings of this research are implemented and receptive to emerging technologies, the Internet of Things (IoT) may address challenges, enhance the economy, and ethically and sustainably increase quality of life.

### References

- [1] Hyame Assem Alameddine et al., “Dynamic Task Offloading and Scheduling for Low-Latency Iot Services in Multi-Access Edge Computing,” *IEEE Journal on Selected Areas in Communications*, vol. 37, no. 3, pp. 668-682, 2019.
- [2] Kun Cao et al., “A Survey on Edge and Edge-Cloud Computing Assisted Cyber-Physical Systems,” *IEEE Transactions on Industrial Informatics*, vol. 17, no. 11, pp. 7806-7819, 2021.
- [3] Min Chen, Yiming Miao, and Iztok Humar, *OPNET IoT Simulation*, Springer Singapore, pp. 1-674, 2019.
- [4] Simon James Fong, and Richard C. Millham, *Bio-Inspired Algorithms for Data Streaming and Visualization, Big Data Management, and Fog Computing*, Springer Nature Singapore, pp. 1-226, 2020.
- [5] Yogeswaranathan Kalyani, and Rem Collier, “A Systematic Survey on The Role of Cloud, Fog, and Edge Computing Combination in Smart Agriculture,” *Sensors*, vol. 21, no. 17, pp. 5922, 2021.
- [6] Zhihan Lv, and Wenqun Xiu, “Interaction of Edge-Cloud Computing Based on SDN And NFV For Next Generation IoT,” *IEEE Internet of Things Journal*, vol. 7, no. 7, pp. 5706-5712, 2019.
- [7] Quyuan Luo et al., “Resource Scheduling in Edge Computing: A Survey,” *IEEE Communications Surveys & Tutorials*, vol. 23, no. 4, pp. 2131-2165, 2021.
- [8] Yuwen Qian et al., “An Edge-Computing Paradigm for Internet of Things Over Power Line Communication Networks,” *IEEE Network*, vol. 34, no. 2, pp. 262-269, 2020.
- [9] Ju Ren et al., “A Survey on End-Edge-Cloud Orchestrated Network Computing Paradigms: Transparent Computing, Mobile Edge Computing, Fog Computing, And Cloudlet,” *ACM Computing Surveys*, vol. 52, no. 6, pp. 1-36, 2019.
- [10] Mohammed Mohammed Sadeeq et al., “IoT and Cloud Computing Issues, Challenges and Opportunities: A Review,” *Qubahan Academic Journal*, vol. 1, no. 2, pp. 1-7, 2021.
- [11] Ovidiu Vermesan, and Joël Bacquet, “Next Generation Internet of Things: Distributed Intelligence at the Edge and Human Machine-To- Machine Cooperation,” *River Publishers*, 2018.
- [12] Ovidiu Vermesan, and Peter Friess, *Digitising the Industry Internet of Things Connecting the Physical, Digital and Virtualworlds*, River Publishers, pp. 1-364, 2022.
- [13] Fangxin Wang et al., “Deep Learning for Edge Computing Applications: A State-Of-The-Art Survey,” *IEEE Access*, vol. 8, pp. 58322-58336, 2020.
- [14] Zhanyang Xu et al., “Artificial Intelligence for Securing IoT Services in Edge Computing: A Survey,” *Security and Communication Networks*, pp. 1-13, 2020.