

<sup>1</sup>Jayesh Rajaram Dhuri\*,

2Dr. E. Vijay Kumar

## Cascaded Soft Computing Technique for Enhanced BLDC Motor Performance



### Abstract:

Electric vehicles, industrial automation, and robots are using brushless DC (BLDC) motors more and more because they are more efficient, reliable, and have a better torque-to-weight ratio. However, traditional Proportional-Integral (PI) and PID controllers lack functionality as well when parameters change, loads change, or DC-link voltage changes, leading to diminished dynamic performance. This research presents a cascaded BLDC motor control system that incorporates two Adaptive Neuro-Fuzzy Inference System (ANFIS) controllers—one for speed regulation and the other for DC-link voltage stabilization—aiming for optimum parameter tuning using the Shuffled Frog Leaping Algorithm (SFLA). The optimization reduces a composite performance index that includes the Integral of Time-weighted Absolute Error (ITAE), overshoot, and DC-link ripple. Simulations in MATLAB/Simulink show that the SFLA-optimized ANFIS works better than regular ANFIS and PI controllers. It has less voltage ripple, smoother torque, more balanced phase currents, and a quicker transient response, all while keeping the steady-state error very low. The findings show that hybrid intelligent optimization works well to make BLDC drives more resilient for real-time application.

**Keywords:** BLDC Motor Control, Adaptive Neuro-Fuzzy Inference System (ANFIS), Shuffled Frog Leaping Algorithm (SFLA); Intelligent Optimization; DC-Link Voltage Stabilization.

### 1. Introduction

Brushless DC (BLDC) motors are highly promoted in electric vehicles, robotics, and industrial automation because of their high efficiency, compactness, and high-torque characteristics. Nonetheless, the performance is very sensitive to changes in such parameters as load torque, DC-link voltage, and temperature [1]. Conventional controllers such as PID or PI can easily lose a robust operation due to such nonlinear and time varying conditions leading to speed ripple, distortion of torque and poor dynamic response [2] [3]. To eliminate these shortcomings, smart control approaches utilizing soft computing approaches have acquired high priority owing to their capacity to adjust and optimize the control parameters in a dynamic manner [4].

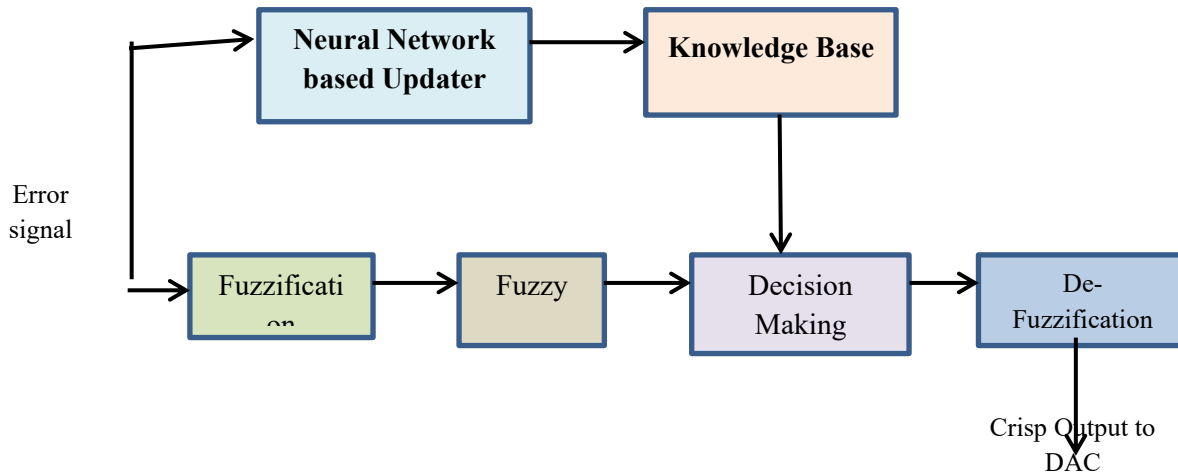
Cascaded soft computing system combines various smart methods, which include Fuzzy Logic, Artificial Neural Networks (ANN), Adaptive Neuro-Fuzzy Inference Systems (ANFIS), and many more within hierarchical control architecture to improve stability and accuracy of the system [5]. This compound system takes advantage of the learning and adaptive properties of these algorithms to obtain accurate speed and torque control in the uncertain situations [6]. The cascaded system will provide minimized error, enhanced efficiency, and smooth operation of BLDC drives by optimizing parameters of controllers with sophisticated algorithms, including Particle Swarm Optimization (PSO) or Shuffled Frog Leaping Algorithm (SFLA) algorithms.

<sup>1</sup> 1PhD. Research Scholar, Department of Electrical Engineering, SRK University, Bhopal, M.P., India

<sup>2</sup> Professor & HOD, Department of Electrical Engineering, SRK University, Bhopal, M.P. India

1Mail: jayeshdhuri87@gmail.com, 2Mail: rvijaykumareda03@gmail.com

\*Corresponding Mail: jayeshdhuri87@gmail.com



**Figure 1:** ANFIS Flowchart

EV and industrial BLDC drives require powerful and flexible speed control in changing operating conditions like parameter drift and DC-link voltage sag and dynamic load disturbances - situations where traditional fixed-gain PI/PID controllers may not competently achieve the desired state [8]. These linear controllers are not adaptable to nonlinearities and parameter uncertainties of the BLDC motor dynamics, leading to poor transient response, increased overshoot, and poor voltage regulation. To address these difficulties, it uses cascaded control structure where optimized ANFIS (Adaptive Neuro-Fuzzy Inference System) controllers are used to substitute the traditional PI regulators in both the outer speed loop and the inner DC-link voltage loop [9]. The Shuffled Frog Leaping Algorithm (SFLA) is another population-based metaheuristic classifier that is based on the intelligent controller structure and parameters and is optimized with the Shuffled Frog Leaping Algorithm by virtue of high convergence speed and ability to search the global space [10]. The objective goal is to reduce ITAE (Integral of Time-weighted Absolute Error), overshoot and DC-link ripple in order to achieve more gentle torque response and improved drive stability. The novelty of this work lies in the integration of a cascaded soft computing control system that will enhance the speed as well as the regulation of the DC-link of BLDC drives under nonlinear and uncertain operating conditions. As opposed to common single-loop, or fixed-gain control approaches the discussed model employs an optimized dual-loop ANFIS control structure based on the Shuffled Frog Leaping Algorithms (SFLA); dynamic adaptability and global optimization features distinguish the proposed method from traditional methods [11]. The cascaded ANFIS–SFLA control strategy will make possible real-time adjustment of control parameters in accordance with external disturbances, such as significant parameter drift, voltage sag, and varying load torque; all of which will ensure transient response improvement, torque smoothness, and voltage stability improvement. In summary, this work proposes a synergistic combination of fuzzy intelligence and evolutionary optimization resulting in a novel contribution toward intelligent and self-adjusting control techniques for future EV generations as well as industrial BLDC motor drives.

## 2. Related Work

Cascaded soft-computing approaches to BLDC motor drives solve the long-standing problem of strong speed/torque control in the face of parameter uncertainty, load variation and DC-link variation - issues in which fixed-gain PI/PID controllers often fail to perform. Recent attempts have integrated neuro-fuzzy controllers, metaheuristic tuning, and cascaded loop designs in order to enhance transient response, minimize torque and current ripple, and narrow DC-link control.

There are some recent studies, which have made a step forward and presented new cascaded architectures and hybrid optimization frameworks. Intidam et al. (2023) [12] designed a PI-ANFIS hybrid that is implemented on BLDC drives so that the augmentation of classical PI structures with ANFIS can decrease the overshoot and steady-state error in speed regulation. Sayyed Bhayo et al. (2025) [13] applied a cascaded controller (inner current/DC-link

and outer speed loop) in which the outer loop was an ANFIS, and inner loops were adjusted with a bio-inspired Snake Optimizer and reported better disturbance rejection and settling time than baseline PID. A systematic comparison of PI and ANFIS controllers in the BLDC speed control described by Subbarao (2024) [14] reported evident dynamic benefits of ANFIS in rise time and overshoot using a variety of load steps. Together with controller design, Zhao et al. (2024) [15] suggested a variant of Shuffled Frog-Leaping Algorithm (MSFLA) that enhances convergence and eliminates local optima - which is a desirable attribute when optimizing numerous ANFIS/ fuzzy-PID parameters in cascaded models. The previous seminal studies by Premkumar (2015) [16] proved the validity of ANFIS-monitored PID/Fuzzy-PID configurations being implemented online to manage BLDC speed control to reduce windup and nonlinearities, which drives additional cascaded designs.

Other more recent works focus on sensorless operation, fault-conscious control and utilizing type-2 fuzzy or interval-based controllers within cascaded loops to achieve robustness to measure noise and parameter drift. In 2025, Rouabhi et al. [17] suggested cascade control with Type-2 fuzzy controllers to expand the robustness margins in motor drives and achieved a better stability in the case of parameter uncertainty. In the study by Shenbagalakshmi et al. (2025) [18], fuzzy/ANFIS-f oriented closed-loop speed control of EV BLDC drives was studied and its benefits in terms of better tracking and disturbance rejection demonstrated in realistic driving load profiles. Just over fault detection and control, recent ANFIS-based fault classifiers have been combined with reconfigurable control supervisors so that cascaded controllers can adjust when short-circuit or overload conditions are signaled [19].

More recent publications pointed towards the role of optimized and hybrid methods in the improvement of the performance of the BLDC. The literature on SFLA indicates that it is a useful metaheuristic in the optimization of engineering systems and has encouraged its application to controlling the gains and neuro-fuzzy parameters in motor drives [20]. Hybrid models of ANFIS (nonlinear mapping) with swarm/metaheuristic optimizers (SFLA, Bat, PSO, etc.) create controllers that do better than single-technique designs on ITAE, overshoot, and DC-link ripple in published simulations and testbeds [21]. Lastly, sensorless cascaded ANFIS schemes and ANFIS+metaheuristic tuned inner converters are both tested in hardware, and the feasibility of a rapid prototyping study involving deploying cascaded soft-computing control to industrial and EV environments is demonstrated.

There is a distinct trend together, most single-loop and fixed-gain controllers, towards cascaded structures putting adaptive neuro-fuzzy controllers in outer speed/DC-link loops and using modern metaheuristics (including modified versions of SFLA) to optimize structure and parameters [22]. It is this hybrid, cascaded soft-computing scheme that underlies the methodology of the better transient behavior, better parameter drift resistance, better Vdc/torque ripple in the modern BLDC drive research.

### **Research Gap**

Although the control of a BLDC motor has advanced substantially, currently, the control of the motor is mostly performed by fixed-gain PI/PID or single-layer intelligent controllers, which do not always succeed in maintaining optimal control in the dynamic environment caused by disturbances in load, DC-link, or controller parameters. The literature has focused on speed (or DC-link regulation), but not a combined control approach. In addition, hybrid intelligent systems have hardly been used together with optimization algorithms to generate global tuning of various loops. This leaves a research gap in the development of a cascaded soft computing framework, including ANFIS based dual-loop controller controlled by metaheuristic algorithm, to improve the dynamic response of the operating system, reduce torque ripple, and provide robust stability under different operating conditions.

### **3. Research Methodology**

Figure 2 outlines the research methodology of the current study which is a multi-stage approach that is structured. It starts with Dataset Collection in which performance data of a three-phase BLDC motor (current, speed, torque, voltage and back-EMF) are monitored with different load and speed conditions. Following this Data Pre-processing to get uniform quality signals is carried out by standardizing and cleaning the signals through resampling, denoising and normalizing of signals. During the Feature Extraction stage, key parameters such as torque ripple, harmonic distortion and speed deviation are obtained to aid in model training. The resulting processed features are then fed to

Cascaded Soft Computing Models where ANFIS controllers control speed and DC-link voltage regulation and optimize their parameters with the Shuffled Frog Leaping Algorithm (SFLA) to reduce ITAE, overshoot and voltage ripple. Lastly, MATLAB/Simulink is used to perform Simulation and Evaluation to assess the performance of the system as compared to PI and standard ANFIS controllers.



**Figure 2:** Flowchart of research methodology

### 3.1 Dataset Collection

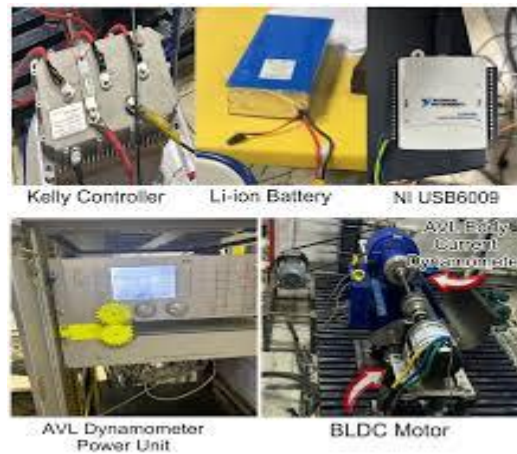
The BLDC Motor Performance Dataset [23] represents an organized collection of experimentally measured parameters due to the three phase Brushless DC motors running in different load, voltage, and speed combinations. It contains pre-recorded values of values of stator current, rotor speed, back-EMF, torque, winding temperature, and vibration signals at various operating conditions. All of the measurements are gathered in folders based on the operating condition (e.g., “Low Load,” “Medium Load,” “High Load,” and “Dynamic Speed) letting them be used effectively within supervised soft computing models [24]. The data is useful in proper assessment and optimization of motor efficiency, torque ripple minimization, and speed control. Each folder holds sensor data, which is numerically coded based on a particular performance behavior of the BLDC motor, and the results of a cascaded soft computing analysis might be analyzed.



**Figure 3:** Sample images from the BLDC Motor Performance Dataset

### 3.2 Data Pre-processing

In this section, an overview of the prerequisite pre-processing functions that should be done before implementing the cascaded soft computing models would be presented and it include filtering, normalization, feature extraction, and data segmentation. Since the measured signals of the BLDC motor were recorded under various operating conditions, their lengths and noise levels were different; consequently, all current, speed, and voltage waveforms were resampled at a constant sampling rate to provide consistency and further enhance the level of computational efficiency [25]. Electrical and sensor noise (the case of figure 4) was removed by signal denoising based on low-pass and moving-average smoothing. Moreover, key parameters (torque ripple, back-EMF amplitude, and harmonic distortion) were extracted through feature extraction methods, and it assist in the sound performance assessment [26]. The data set was divided into various operating conditions, namely low load, medium load, high load, and variable speed to enable quality training of the models. Table 1 presents the full distribution that enhances the modelling, prediction, and performance optimization process.



**Figure 4:** Pre-processing Image Sample

**Table 1:** Distribution of the dataset

Operating Class	Total Samples	Train	Test
Low Load	500	400	100
Medium Load	480	384	96
High Load	450	360	90
Dynamic Speed	520	416	104
Variable Voltage	460	368	92
High Temperature	420	336	84
Torque Ripple Condition	470	376	94
Fault Condition	450	360	90
Normal Operation	500	400	100
<b>TOTAL</b>	<b>4,250</b>	<b>3,400</b>	<b>850</b>

### 3.3 Feature Extraction

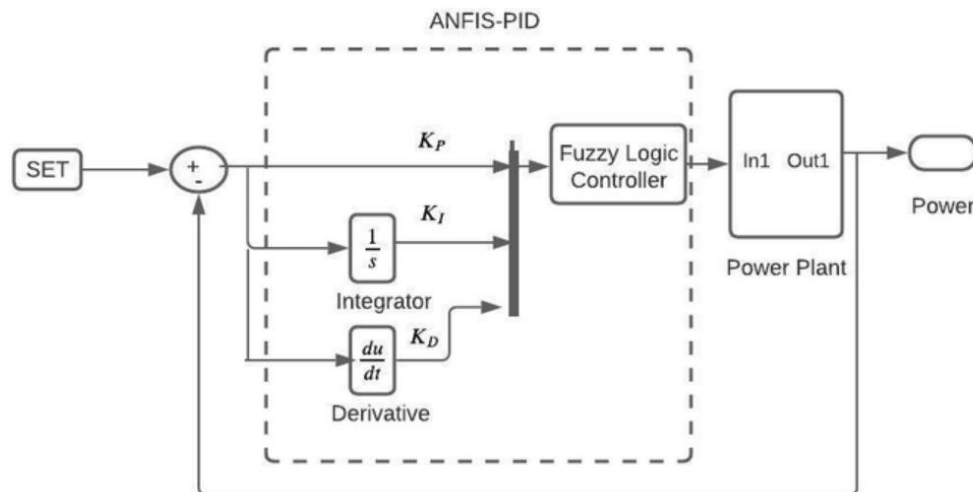
This process involves extraction of key performance related features out of the sampled BLDC motor signal by use of computational models which are developed to analyze dynamic behaviour [27]. In order to come up with a better performance classifier, the researchers initially filtered stator current, rotor speed, back-EMF and torque waveforms

with cascading soft computing blocks, with the first fuzzy logic layer detecting nonlinear variations, and the second neural network layer tuning features patterns [28]. There are intermediate layers that are fixed or frozen to maintain former motor behavior properties to provide permanence in feature representation. The steps of further connected layers are then added and trained on the motor data to learn higher-level features like the index of torque ripple, harmonic content, speed deviation, and thermal drift. The extracted features are then utilized to maximize motor performance, increase stability, and minimize prediction error.

### 3.4 Classification Models

- **ANFIS Controller**

The ANFIS controller is an intelligent hybrid controller system, a hybrid system with the human-like reasoning ability of fuzzy methods and the adaptive learning and self-adaptation skill of artificial neural networks, which can make the control system more accurate, robust, and flexible [29]. In this algorithm a set of rules and membership functions are defined using the fuzzy logic to map the input signals to the desirable outputs by relying on expert knowledge and the neural network component is utilized to automatically tune the parameters with training, making less use of manual tuning. ANFIS has a fuzzy inference structure of the Sugeno type; in general, the input is fuzzified, implemented through rule-based layers, and finally defuzzified to derive a crisp control action [30]. Algorithms like backpropagation or hybrid learning are used to minimize membership functions and rule weights during training to minimize control errors. Consequently, ANFIS controller is able to respond to nonlinearities, uncertainties and dynamic changes that occur in complex systems as compared to traditional methods of control. It is especially important in such applications as the motor control of BLDC motors, robotics, renewable energy, automobile control, and process automation when it is necessary to have a high level of control, and high resistance to disturbances. All in all, the ANFIS offers an effective, adaptable, and intelligent, yet smart control strategy utilizing the advantages of a combination of the neural networks and fuzzy logic to enhance the accuracy, efficiency, and stability of the system [31].

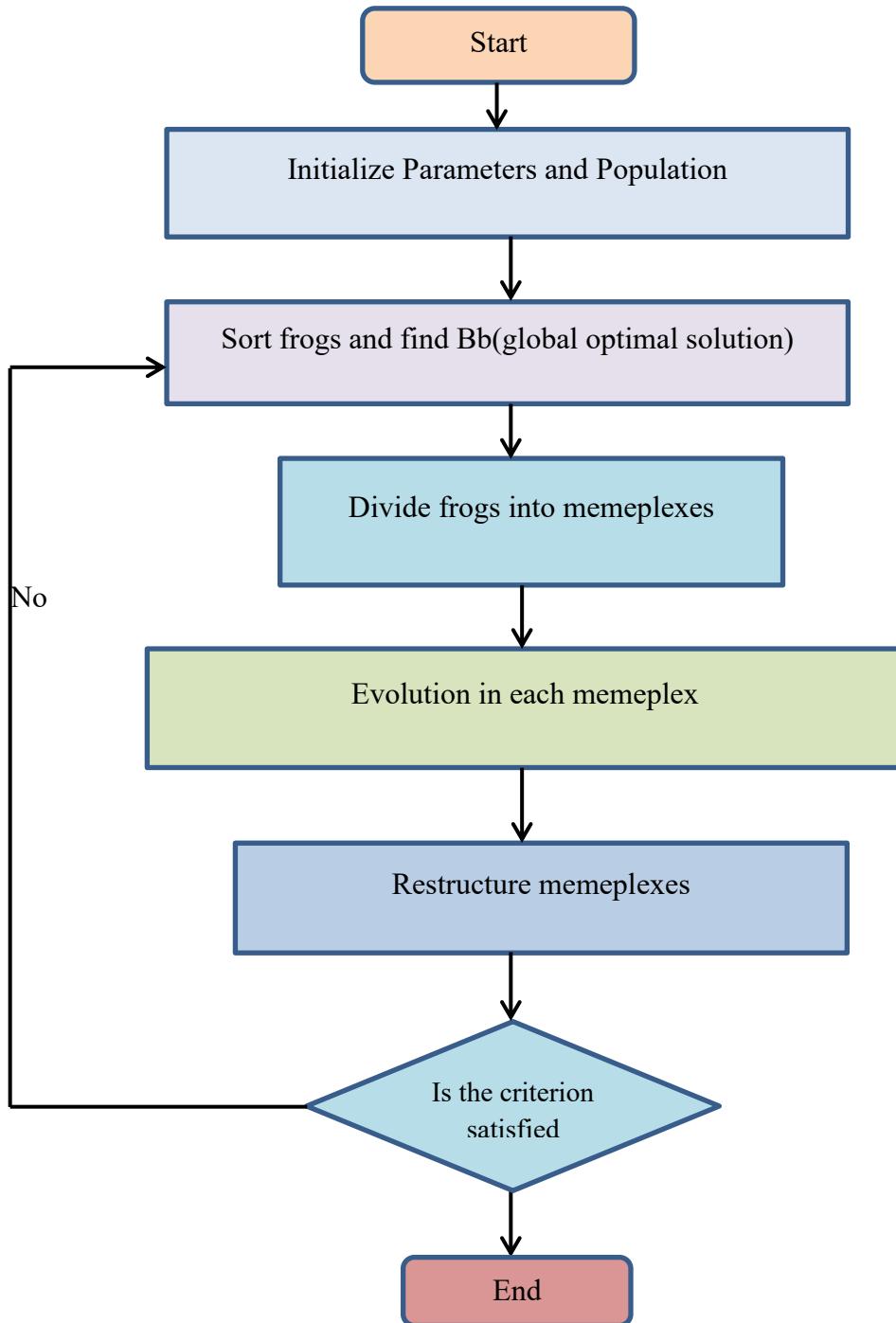


**Figure 5:** Block Diagram of ANFIS Controller [32]

- **The Shuffled Frog Leaping Algorithm (SFLA)**

The Shuffled Frog Leaping Algorithm (SFLA) is a metaheuristic search algorithm optimization method based on the physical behavior of group of frogs in search of food [33]. At SFLA, there is a population of virtual frogs that symbolizes possible solutions subdivided into groups of solutions known as memeplexes. Memeplexes are the independent evolutionary processes with each needing a local search mechanism in which poorly performing frogs change their positions (solutions) and learn to do so by observing better ones. Upon repetition, the memeplexes are periodically shuffled to provide information exchange among groups to increase global exploration and avert

premature convergence [34]. This local intensification and global diversification balance allows SFLA to effectively address complex optimization problems in engineering, scheduling and machine learning spaces [35].



**Figure 6:** Flowchart of the Shuffled Frog Leaping Algorithm (SFLA) [36]

The mathematical enhancement phase for the most disadvantaged frog from the optimal frog  $X_b$  within its memeplex is denoted as:

$$D = (rand) \times X_b - X_w \quad (1)$$

$$X_{wnew} = X_w + D \tag{2}$$

If unsuccessful, the update is attempted toward the global best  $X_g$  using the same formula. The use of stochastic coefficients ensures variability in movement and prevents premature convergence to suboptimal solutions.

The ANFIS controllers in the outer speed loop and inner DC-link voltage loop are optimised with the Shuffled Frog Leaping Algorithm (SFLA) and the objective of minimising a composite performance index, comprising of steady-state, transient and smoothness of voltages. The fitness function takes into account the Integral of Time-weighted Absolute Error (ITAE) of speed regulation and DC-link voltage regulation, peak overshoot of speed response (MP), and root mean square of DC-link voltage ripple ( $V_{rms\_rippleD}$ ). This provides a rapid settling, reducing overshoot and minimized energy variation during load and input variations. The objective function is expressed as:

$$min_{\theta} J_{\theta} = w_1.ITAE_w + w_2.ITAE_{Vdc} + w_3.MP + w_4.V_{rms\_rippleD} = (rand) \times X_b - X_w \tag{3}$$

where  $\theta$  is the vector of ANFIS parameters (membership function shapes, rule base coefficients, and scaling gains) tuned by SFLA, and  $w_1, w_2, w_3, w_4$  are weight factors reflecting the relative importance of each term. The ITAE terms are defined as:

$$ITAE_w = \int_0^t |w * t - w(t)| dt, ITAE_{Vdc} = \int_0^t |V_{dc} * t - V_{dc}(t)| dt \tag{4}$$

### 3.5 Statistical Evaluation Criteria

The effectiveness of Inception V3, DenseNet201, and hybrid models could be evaluated using four metrics: accuracy, precision, recall, and F1 score (Equations 5-8). The previously mentioned standards were employed to evaluate the predictive effectiveness of the models.

$$Accuracy = \frac{TN+TP}{FP+FN+TP+TN} \tag{5}$$

$$Recall = Sensitivity = \frac{TP}{FN+TP} \tag{6}$$

$$Precision = \frac{TP}{TP+FP} \tag{7}$$

$$F1 - score = \frac{2 * Precision * Recall}{Precision + Recall} \tag{8}$$

## 4. Results and Discussion

The simulation of the suggested method is conducted in MATLAB 2021A utilising the specified characteristics of the BLDC motor.

**Table 2:** Characteristics of the BLDC motor

Winding Type	Wye-wound
Back EMF	Perfect trapezoid-Specify maximum flux
Maximum permanent magnet flux	0.0175
Rotor angle over which back emf is constant	0.42857 rad
Number of pole pairs	4
Rotor angle definition	Angle between the a-phase magnetic axis and the q-axis
Stator Self-Inductance per phase	1e-4 henry
Stator Mutual Inductance	1e-5 henry
Stator resistance	0.1

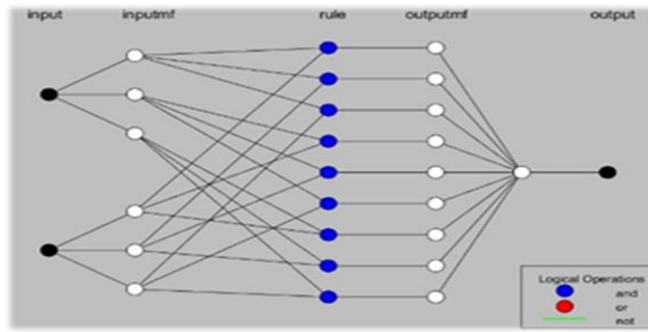


Figure 7: ANFIS-1 topology and logical operations

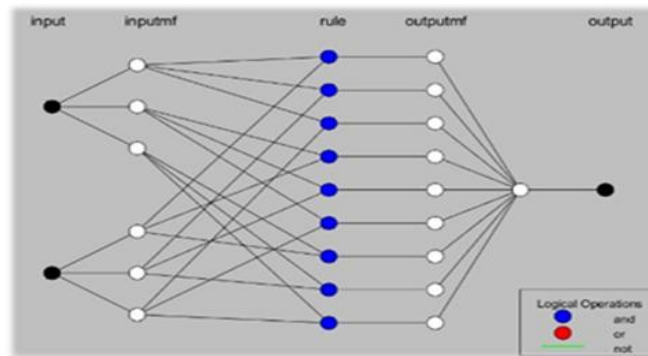


Figure 8: ANFIS-2 topology and logical operations

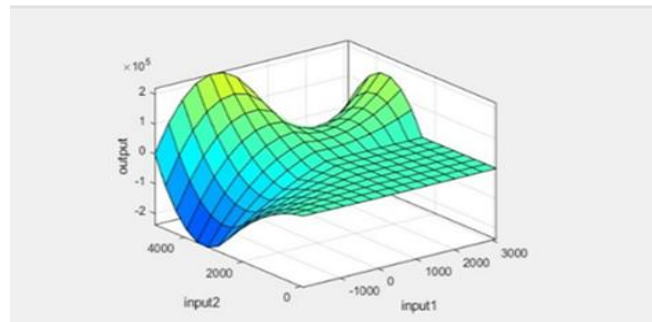


Figure 9: Learned input-output surface of ANFIS-1

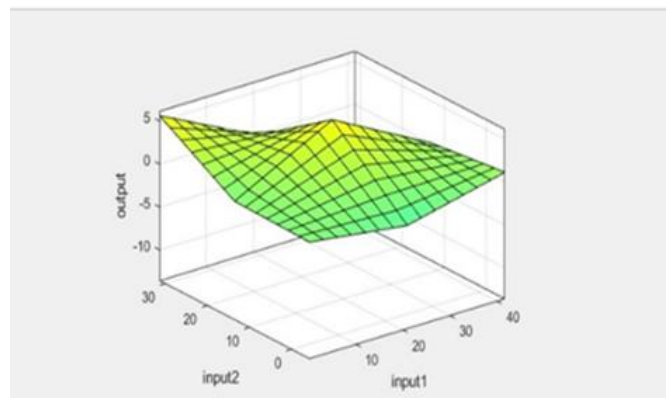
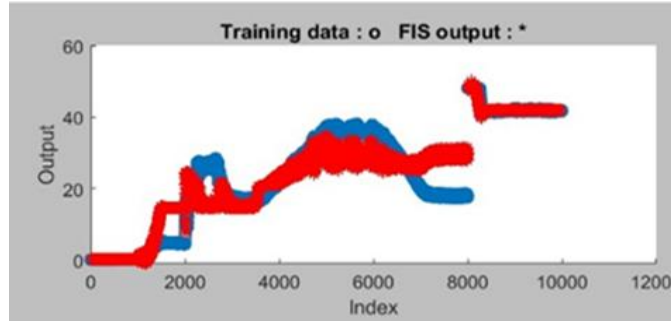
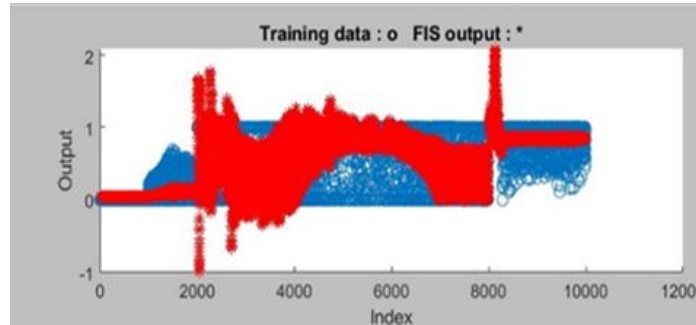


Figure 10: Learned input-output surface of ANFIS-2



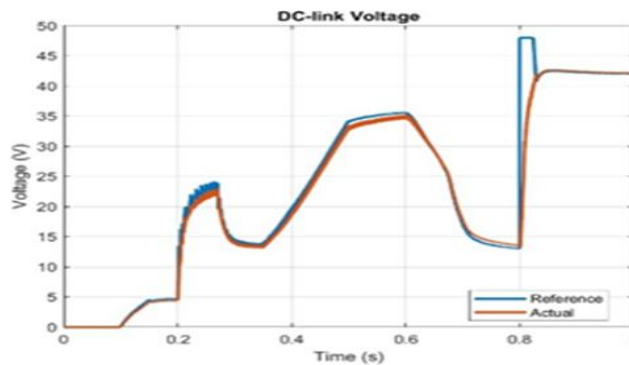
**Figure 11:** Training fit: target vs. ANFIS-1 output

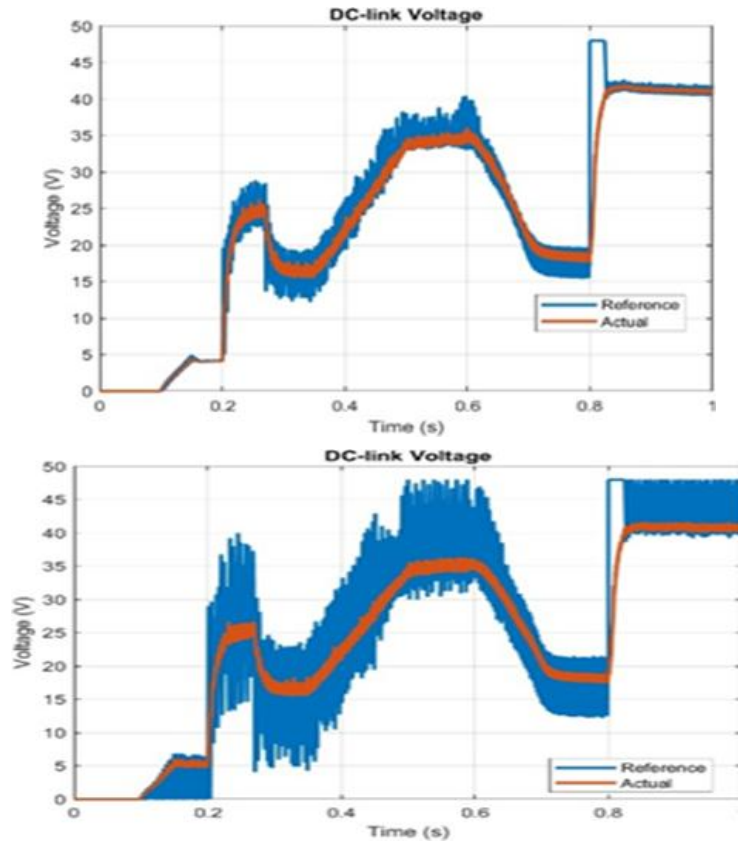


**Figure 12:** Training fit: target vs. ANFIS-2 output

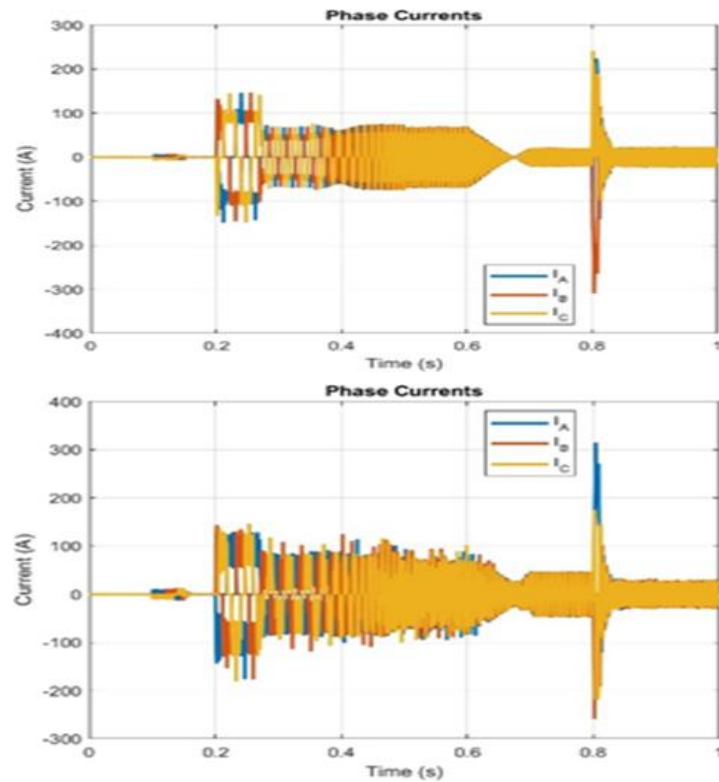
The ANFIS-1 results begin with the schematic representation of its topology and logical operations (Figure 7), depicting the multi-layered structure responsible for mapping the input error signals and their derivatives into appropriate control outputs through fuzzification, rule evaluation, and defuzzification stages [37]. This is followed by the learned input–output surface plot (Figure 8), which visually captures the nonlinear mapping realized by ANFIS-1 after training, showing smooth gradient transitions and appropriate curvature that reflect the system’s adaptive learning capability [38]. The training fit plot (Figure 9) shows that the level of correlation existing between the target outputs and the ANFIS-1 predictions is high making the deviation negligible reflecting on high generalization and accurate error reduction in the process of learning [39].

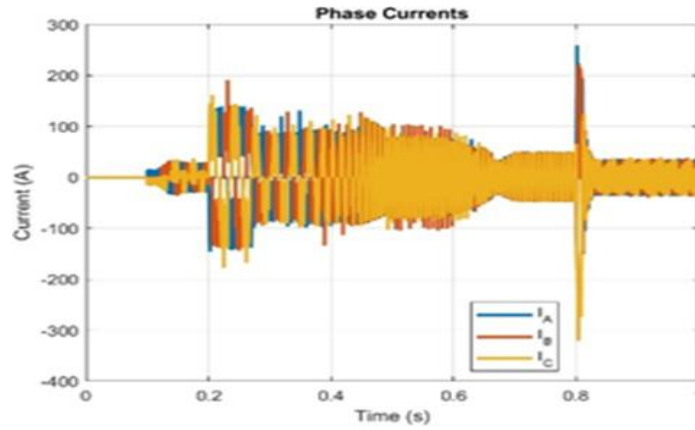
Likewise, the ANFIS-2 results start with its topology and logical operation diagram (Figure 10), which displays a parallel structure that is optimized to the DC-link voltage control loop, in which membership functions and fuzzy rules are adjusted to respond to any voltage change promptly [40]. The corresponding learned inputoutput surface (Figure 11) indicates a developed nonlinear control surface which indicates that the model was effective in capturing the underlying dynamics of the voltage regulation task [41]. Lastly, the training fit plot (Figure 12) indicates that there is a close overlap between the desired and actual output, which proves successful convergence of the learning algorithm and support that the model can be used to control the cascaded BLDC drive right-hand-rule drive architecture in real-time [42].



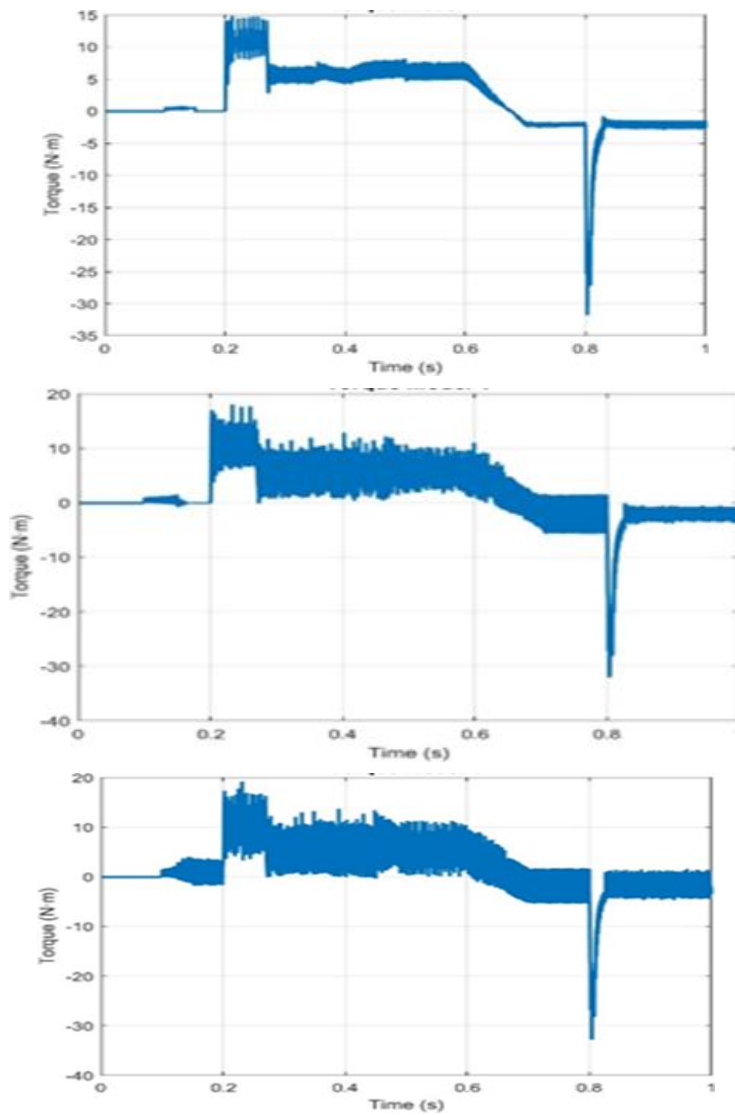


**Figure 13:** System response using the optimized ANFIS controller, showing improved accuracy and faster convergence compared to conventional approaches

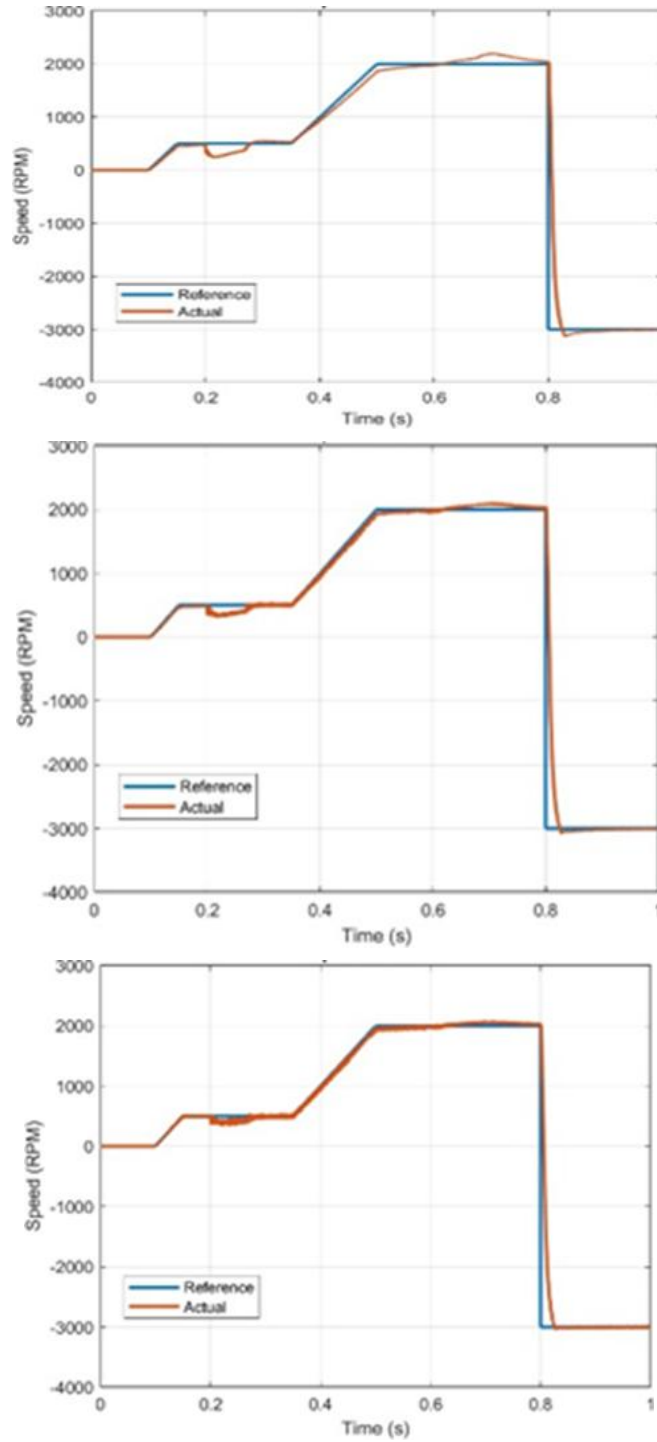




**Figure 14:** System response under the standard ANFIS controller, highlighting its nonlinear modeling capability without parameter optimization



**Figure 15:** System response with the conventional PI controller, serving as a baseline for comparison with ANFIS and optimized ANFIS methods



**Figure 16:** Comparative system responses under PI, standard ANFIS, and optimized ANFIS controllers, demonstrating the superior accuracy, stability, and faster convergence of the optimized ANFIS compared to the conventional PI and standard ANFIS approaches

The DC-link voltage regulation in Optimized ANFIS has the best tracking of the reference with the least ripple and lowest settling even in the face of abrupt load and speed fluctuations. ANFIS is also well tracked and at slightly higher ripple levels, especially when tracking transients. Model-3, despite remaining on the reference, has the

highest value of ripple amplitude, and slower ripple suppression, implying poorer smoothness of voltages than in the other two models.

Regarding the quality of phase currents, Optimized ANFIS can stabilize three-phase currents ( $I_A$ ,  $I_B$ ,  $I_C$ ) and dampen oscillations rapidly after being disturbed. ANFIS has the same balance and higher transient oscillations. PI demonstrates the maximum transient oscillation and more significant amplitude changes in the events of dynamic nature, which implies ineffective damping.

Optimized ANFIS provides the smoothest torque response, low steady-state ripple and controlled responses to sharp acceleration and deceleration command, in terms of torque. ANFIS also generates a slightly higher ripple but is still within acceptable levels whereas PI shows the maximum torque ripple under steady conditions and additional variation under reversals.

Speed tracking performance is also good in all three models and each model has a negligible steady-state error. Optimized ANFIS however reacts a bit quicker to acceleration and braking transitions, ANFIS reacts relatively equally and PI exhibits a little longer lag and small transient over-shoot.

**Table 3:** Time Domain Performance Metrics

Controller	Rise Time (s)	Over shoot (%)	Settling Time (s)
Optimized ANFIS	0.335	50	0.905
ANFIS	0.33	50	0.89
PI	0.365	50	0.89

The temporary performance analysis of the three controllers, the Optimized ANFIS, ANFIS, and PI, discloses that Optimized ANFIS controllers have a higher rise time of 0.335 as compared to the PI of 0.365 s and close to the normal ANFIS of 0.330 s, the response to commands to increase velocity is quicker. The overshoot of all three controllers compared to the target speed is 50%, which can be attributed to the nature of the aggressive acceleration of torques of the BLDC drive. The Optimized ANFIS has the lowest settling time with a value of 0.905 s which is slightly better than the standard ANFIS, and the same as the PI controller with a settling time of 0.890 s. On the whole, Optimized ANFIS has enhanced transient behaviour, being faster and more stable to settling behaviour than the conventional PI controller, and having similar levels of overshoot.

## 5. Conclusion

In short, ANFIS with SFLA used in cascaded BLDC motor controller is a powerful and successful approach in circumventing the constraints of traditional PI and fixed parameter fuzzy controllers. The two-loop system with an outer speed loop and inner DC-link voltage loop is decoupled, such that the system can perform its tasks both rapidly, precisely and stably over a wide range of conditions. According to the simulation results, the Optimised ANFIS is found to greatly improve the torque smoothness, reduce DC-link ripple, and transient speed response with only a slight steady-state error. The optimized approach has greater damping of the phase current oscillations, quicker recovery of disturbances, and enhanced performance than the PI and the traditional ANFIS controllers. These enhancements presuppose that the ANFIS-SFLA method developed is a perfect choice to be used in the problematic applications such as electric cars, robotics, and renewable energy systems, where the reliability and adaptability to the new conditions are of utmost importance. The future research may be directed at experimental validation and generalization of the methodology to include fault-tolerant conditions of control to increase reliability.

## References

- [1] H. Maghfiroh, M. Ahmad, A. Ramelan, and F. Adriyanto, "Fuzzy-PID in BLDC Motor Speed Control Using MATLAB/Simulink," *J. Robot. Control*, vol. 3, no. 1, pp. 8–13, 2022, doi: 10.18196/jrc.v3i1.10964.
- [2] M. S. Aspalli, F. M. Munshi, and S. L. Medegar, "Speed control of BLDC motor with four switch three phase inverter using digital signal controller," in *2015 International Conference on Power and Advanced Control Engineering (ICPACE)*, IEEE, 2015, pp. 371–376.
- [3] Y. Sheng, X. Wang, L. Wang, and P. Hou, "Fuzzy-PID control system design of brushless DC motor based on vector control," in *2017 Chinese automation congress (CAC)*, IEEE, 2017, pp. 5583–5587.
- [4] R. Goswami and D. Joshi, "Performance review of fuzzy logic based controllers employed in brushless DC motor," *Procedia Comput. Sci.*, vol. 132, pp. 623–631, 2018.
- [5] W. Zhou and X. Zhang, "Double closed loop sliding mode PID control system for BLDCM of pure electric vehicle," in *2016 35th Chinese Control Conference (CCC)*, IEEE, 2016, pp. 4730–4734.
- [6] M. Ahmad, "Development of Speed Control and Monitoring System in BLDC Motor with Hall Sensor," *Final Proj. Electr. Eng. Dep. Univ. Sebel. Maret Surakarta*, 2020.
- [7] R. I. Bobby, K. Abdullah, A. Z. Jusoh, N. Parveen, and M. Mahmud, "Adaptive control of nonlinear system based on QFT application to 3-DOF flight control system," *TELKOMNIKA (Telecommunication Comput. Electron. Control.)*, vol. 17, no. 5, pp. 2595–2606, 2019.
- [8] H. Yin, W. Yi, J. Wu, K. Wang, and J. Guan, "Adaptive fuzzy neural network PID algorithm for BLDCM speed control system," *Mathematics*, vol. 10, no. 1, p. 118, 2021.
- [9] P. M. De Almeida, R. L. Valle, P. G. Barbosa, V. F. Montagner, V. Čuk, and P. F. Ribeiro, "Robust control of a variable-speed BLDC motor drive," *IEEE J. Emerg. Sel. Top. Ind. Electron.*, vol. 2, no. 1, pp. 32–41, 2020.
- [10] A. El-Samahy and M. A. Shamseldin, "Brushless DC motor tracking control using self-tuning fuzzy PID control and model reference adaptive control," *Ain Shams Eng. J.*, vol. 9, no. 3, pp. 341–352, 2018.
- [11] R. Kandiban and R. Arulmozhiyal, "Speed control of BLDC motor using adaptive fuzzy PID controller," *Procedia Eng.*, vol. 38, pp. 306–313, 2012.
- [12] Stalin David, D. "Execution of a Portable Fuzzy Controller for Speed Regulator Brushless DC Motors." *Industrial Control Systems* (2024): 181-201.
- [13] Mohanraj, Deepak, Ranjeev Aruldavid, Rajesh Verma, K. Sathiyasekar, Abdulwasa B. Barnawi, Bharatiraja Chokkalingam, and Lucian Mihet-Popa. "A review of BLDC motor: state of art, advanced control techniques, and applications." *Ieee Access* 10 (2022): 54833-54869.
- [14] Ali, H. Jawad, D. Kammel Shary, and H. Dawood Abbood. "A Review of Intelligent Techniques Based Speed Control of Brushless DC Motor (BLDC)." *Basrah Journal for Engineering Sciences* 24, no. 1 (2024): 109-119.
- [15] Luo, Chong, Jianyu Wang, Enrico Zio, and Qiang Miao. "Subdomain adaptation order network for fault diagnosis of brushless DC motors." *IEEE Transactions on Instrumentation and Measurement* 73 (2024): 1-10.
- [16] Cheng, Yuan, Xueli Lyu, and Shasha Mao. "Optimization design of brushless DC motor based on improved JAYA algorithm." *Scientific Reports* 14, no. 1 (2024): 5427.
- [17] Zhang, Pan, Zhaoyao Shi, Bo Yu, and Haijiang Qi. "Research on the Control Method of a Brushless DC Motor Based on Second-Order Active Disturbance Rejection Control." *Machines* 12, no. 4 (2024): 244.
- [18] Subbarao, Mopidevi, Kiransai Dasari, SSSR Sarathbabu Duvvuri, K. R. K. V. Prasad, B. K. Narendra, and VB Murali Krishna. "Design, control and performance comparison of PI and ANFIS controllers for BLDC motor driven electric vehicles." *Measurement: Sensors* 31 (2024): 101001.
- [19] Santra, Subhendu Bikash, Arunava Chatterjee, Debashis Chatterjee, Sanjeevikumar Padmanaban, and

- Krishnatreya Bhattacharya. "High efficiency operation of brushless DC motor drive using optimized harmonic minimization based switching technique." *IEEE Transactions on Industry Applications* 58, no. 2 (2022): 2122-2133.
- [20] Trivedi, Manish S., and Ritesh Kumar Keshri. "Evaluation of predictive current control techniques for PM BLDC motor in stationary plane." *IEEE Access* 8 (2020): 46217-46228.
- [21] Pakdeeto, Jakkrit, Saruta Wansungnoen, Kongpol Areerak, and Kongpan Areerak. "Optimal speed controller design of commercial BLDC motor by adaptive Tabu search algorithm." *IEEE Access* 11 (2023): 79710-79720.
- [22] Krishnamoorthy, Saravana Kumar, Narottam Das, Prasad Gudimetla, and Kianoush Emami. "Enhanced speed control for BLDC motors using WOA-integrated PID controller optimization." *IEEE Access* (2024).
- [23] CS, Sai Ganesh. "Artificial neural networks based analysis of BLDC motor speed control." *arXiv preprint arXiv:2108.12320* (2021).
- [24] <https://www.kaggle.com/datasets/ziya07/bldc-motor-dataset>
- [25] Arivalahan, R., S. Venkatesh, and T. Vinoth. "An effective speed regulation of brushless DC motor using hybrid approach." *Advances in Engineering Software* 174 (2022): 103321.
- [26] Malla, Siva Ganesh, Priyanka Malla, Jagan Mohana Rao Malla, Ruchira Singla, Pallavi Choudekar, Rajesh Koilada, and Manoj Kumar Sahu. "Whale optimization algorithm for PV based water pumping system driven by BLDC motor using sliding mode controller." *IEEE Journal of Emerging and Selected Topics in Power Electronics* 10, no. 4 (2022): 4832-4844.
- [27] Zhang, Yang, Radomir Gono, and Michał Jasiński. "An improvement in dynamic behavior of single phase PM brushless DC motor using deep neural network and mixture of experts." *IEEE Access* 11 (2023): 64260-64271.
- [28] Unlersen, Muhammed Fahri, Selami Balci, Muhammet Fatih Aslan, and Kadir Sabanci. "The speed estimation via BiLSTM-based network of a BLDC motor drive for fan applications." *Arabian Journal for Science and Engineering* 47, no. 3 (2022): 2639-2648.
- [29] Mahmouditabar, Farshid, Abolfazl Vahedi, and Nouredine Takorabet. "Robust design of BLDC motor considering driving cycle." *IEEE Transactions on Transportation Electrification* 10, no. 1 (2023): 1414-1424.
- [30] Kristiyono, Roedy, and Wiyono Wiyono. "Autotuning fuzzy PID controller for speed control of BLDC motor." *Journal of Robotics and Control (JRC)* 2, no. 5 (2021): 400-407.
- [31] Maghfiroh, Hari, Agus Ramelan, and Feri Adriyanto. "Fuzzy-PID in BLDC motor speed control using MATLAB/Simulink." *Journal of Robotics and Control (JRC)* 3, no. 1 (2021): 8-13.
- [32] Dutta, Pallav, and Santanu Kumar Nayak. "Grey wolf optimizer based PID controller for speed control of BLDC motor." *Journal of Electrical Engineering & Technology* 16, no. 2 (2021): 955-961.
- [33] Agrawal, L. K., B. K. Chauhan, N. K. Saxena, and P. Joshi. "Speed control of BLDC motor with neural controller." *Indian Journal of Science and Technology* 14, no. 4 (2021): 373-381.
- [34] Al-Mutayeb, Yousef, and Moayed Almobaied. "Luenberger observer-based speed sensor fault detection of BLDC Motors." In *2021 International Conference on Electric Power Engineering–Palestine (ICEPE-P)*, pp. 1-7. IEEE, 2021.
- [35] Hemalatha, N., S. Venkatesan, R. Kannan, S. Kannan, A. Bhuvanesh, and A. S. Kamaraja. "Sensorless speed and position control of permanent magnet BLDC motor using particle swarm optimization and ANFIS." *Measurement: Sensors* 31 (2024): 100960.
- [36] Mahmud, Md, S. M. A. Motakabber, AHM Zahirul Alam, Anis Nurashikin Nordin, and AKM Ahasan Habib. "Modeling and performance analysis of an adaptive PID speed controller for the BLDC motor." *International Journal of Advanced Computer Science and Applications* 11, no. 7 (2020).
- [37] Hammoodi, Salman Jasim, Kareem Sayegh Flayyih, and Ahmed Refaat Hamad. "Design and implementation

- speed control system of DC motor based on PID control and matlab simulink." *International Journal of Power Electronics and Drive Systems* 11, no. 1 (2020): 127-134.
- [38] Genc, Naci, and Zhansaya Seidakhanovna Kalimbetova. "Cuckoo optimization algorithm based fuzzy logic speed controller for BLDC motor." *Electric Power Components and Systems* 52, no. 11 (2024): 2065-2077.
- [39] Wang, Tingting, Hongzhi Wang, Chuhang Wang, and Huangshui Hu. "A novel PID controller for BLDCM speed control using dual fuzzy logic systems with HSA optimization." *Scientific Reports* 12, no. 1 (2022): 11316.
- [40] Begum, Shaik Ruksana, Loveswara Rao Burthi, and Shobha Rani Depuru. "Regenerative braking in electric vehicles using BLDC motor with modified torque and adaptive-Neuro-Fuzzy-control." *Przełąd Elektrotechniczny* 100 (2024).
- [41] Anshory, Izza, Dwi Hadidjaja, and Ribangun Bambang Jakaria. "Blde Motor: Modeling and Optimization Speed Control Using Firefly Algorithm." *Dinamik* 25, no. 2 (2020): 51-58.
- [42] Razmjooy, Navid, Zahra Vahedi, Vania V. Estrela, Reinaldo Padilha, and Ana Carolina Borges Monteiro. "Speed control of a DC motor using PID controller based on improved whale optimization algorithm." In *Metaheuristics and Optimization in Computer and Electrical Engineering*, pp. 153-167. Cham: Springer International Publishing, 2020.
- [43] Saleh, Isiyaku, Amir Abdullahi Bature, Salinda Buyamin, and Mohamad Amir Shamsudin. "Speed control of a BLDC motor using artificial neural network with ESP32 microcontroller based implementation." In *Control, Instrumentation and Mechatronics: Theory and Practice*, pp. 358-368. Singapore: Springer Nature Singapore, 2022.